



*cleaning  
systems*



*quality equipment,  
securing maximum hygiene*

*Since 1976*



*Passion for Hygiene*

▶ *personal hygiene*

▶ *cleaning systems*

▶ *industrial washing systems*

▶ *components*

▶ *drainage*





**Take advantage of our knowledge**

Elpress is the leading specialist in the field of industrial hygiene. We focus on delivering total solutions: customer-focused systems, professionally integrated into your business process. By simplifying processes and sharing our knowledge, our wide product range enables us to add value to your business. Take advantage of our knowledge and let one of our specialists advise you.



# Cleaning systems

economical, ergonomic and practical

---

**Elpress is the leading specialist in the field of industrial hygiene. We focus on delivering total solutions: customer-focused systems, professionally integrated into your business process. By simplifying processes and sharing knowledge, we can add value to your business with a complete range of products.**

## Cleaning systems

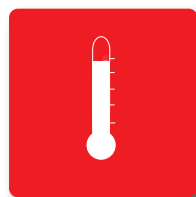
Cleaning requires increasing degrees of specialism, for which knowledge and experience are critical. These two essential elements are extensively guaranteed at Elpress. We supply a balanced product range for the cleaning, foaming or disinfecting of your business and production rooms. Our cleaning systems can be found, and have been proven, around the world.

## Service

Service is our keyword. After you invest in our products, we continue to work with you. For maintenance and/or repairs, our daily operating mobile service vans carry the right equipment and knowledge on board. This enables us to provide you with optimal disposal in the short and long term. A complete package of solutions, therefore, always with a strong focus on you as our customer. Elpress is an ambitious organisation, and we can justifiably say we have a passion for hygiene!

## Our development principles

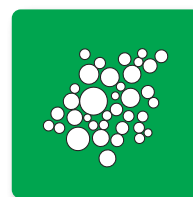
The four basic elements of our approach:



*Temperature*



*Time*



*Chemicals*



*Mechanical force*

---



*"To be the first choice for hygienic products, by developing leading solutions and providing added value while spreading our knowledge and passion for hygiene"*

### **Conditions**

Nothing in this document may be copied, published or disseminated in any other way without the written permission of Elpress BV. The information in this brochure has been compiled with care, and no rights may be derived from it. Articles, details and colours on the displayed images can differ from the actual products.

For the most recent information, please visit our website:

[www.elpress.com](http://www.elpress.com)

# Product categories

one-stop-shopping

---



## Personal hygiene

Maximum control of infection risks.  
Functional, high-quality and hygienically designed.



## Cleaning systems

Elpress cleaning systems have set the standard in the area of cleaning business and production areas since 1988.



## Industrial washing systems

Efficient, cost-saving and reliable cleaning of your load carriers such as crates, pallets and boxes.



## Components

All peripheral equipment that is used in a cleaning process. By maintenance contract or on demand. We maintain fast delivery times.



## Drainage

Elpress drains and gutters are of excellent and proven quality.

# Index

---

## **Booster units**

Booster unit LDC-Q (max. 20 bar, up to 6 users)	10
Mobile booster unit MLDC-COMPACT (max. 20 bar, 1 user)	12
Booster unit LDC-Q (max. 20 bar, up to 8 users)	14
Booster unit LDC-Q (max. 20 bar, from 12 users)	16
Booster unit MDC (max. 44 bar, from 3 users)	18
Booster unit WMRA (max. 80 bar, 1 user)	20

## **Rinsing, foaming and disinfecting**

Foam or disinfection unit CF-Q / CD-Q (max. 8 bar, from 4 users)	22
Foam and disinfection unit CFD-Q (max. 8 bar, from 4 users)	24
Decentral satellites	26
Central satellites	28

## **Mobile applications**

Mobile cleaning tanks (foaming and disinfecting)	30
Mobile satellites	32

## **Accessories**

Hose reels and cleaning hoses	34
Spray guns	35
Lances	36
Reel and hose sets	37
Accessories	38

# Cleaning systems

economical, ergonomic and practical

---

**Our cleaning systems are extremely efficient, thrifty in the use of water and power, low maintenance and easy to operate. Depending on the nature of the work to be performed in the area, we develop cleaning systems which, for example, can disinfect a room at bacteriological level. We supply solutions that clean, foam or disinfect your premises. All our cleaning systems are designed to be as practical as possible, and are produced in house.**

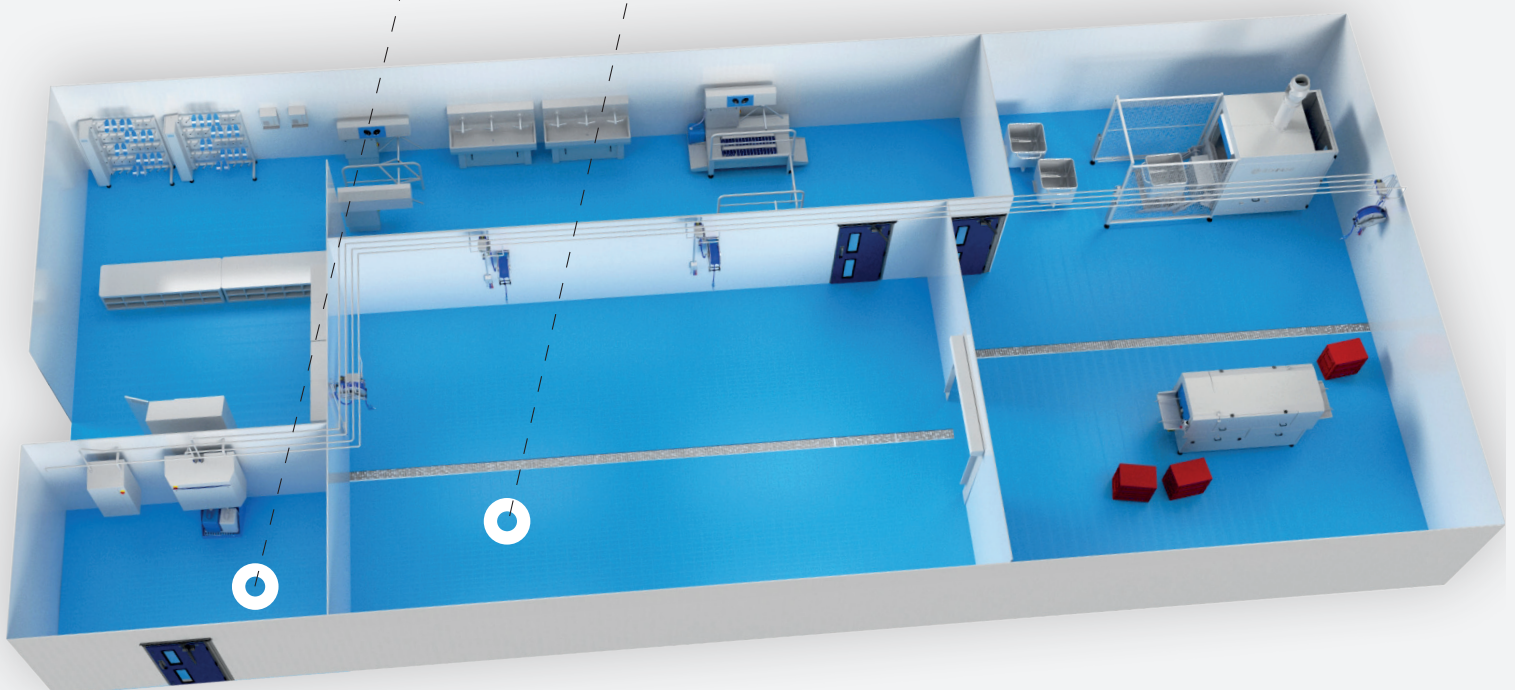


The features of our products:

- Modular structure
- Ergonomic and hygienic design
- Economical with chemicals and water
- User-friendly
- Easy to clean and maintain

*Passion for Hygiene*

# Production and maintenance rooms



# Booster unit

LDC-Q (max. 20 bar, up to 6 users)

**Once it is started up, the LDC-Q will bring your piping system to the right working pressure, enabling its users to start cleaning. When opening/closing one of the tap points, the LDC-Q will automatically start or switch to stand-by. The LDC-Q is easy to maintain, low noise and easy to access.**

## Options and/or accessories

*The LDC-Q is optionally available with a stainless steel break tank (backflow protection), enclosure and/or a built-in satellite of type Blocksat RF/RFD.*

## Your benefits

- Energy saving through optimal pressure control
- Frequency-controlled pumps
- Very compact construction
- Available with break tank (backflow protection)



LDC-Q 50



## Versions:

- ▶ LDC-Q 50  
Max. 20 bar working pressure\*  
For 2-3 users  
Article number: 83301005
- ▶ LDC-Q 100  
Max. 20 bar working pressure\*  
For 4-6 users  
Article number: 83301105

\* including 5 bar initial

# Other designs

and technical information



*The LDC-Q 100 with optional stainless steel break tank.*



*LDC-Q 50 with optional stainless steel enclosure.*

Type	LDC-Q 50	LDC-Q 100
Number of users	2-3	4-6
Working pressure / bar	20 (max.)*	20 (max.)*
Ltr / pump / minute	67	133
Ltr / total / minute	67	133
m <sup>3</sup> / total / hour	5 (max.)	10 (max.)
Pump brand	Grundfos	Grundfos
Pump type	CRIE	CRIE
Power / kW	3	5.5
Number of pumps	1	1
Total power / kW	3	5.5
Switchboard made of	Plastic	Plastic
Electrical connection	400 V /50 Hz	400 V /50 Hz
Fuse	3 x 16A	3 x 16A
Temperature in °C	70 (max.)	70 (max.)
Width / mm	430	525
Depth / mm	400	400
Height / mm	825	1070
Connection in	1 1/4" BSP ext.	2" BSP ext.
Connection out	3/4" BSP ext.	1 1/2" ext.
Break tank (optional)	70 litres	70 litres

# Mobile booster unit

MLDC-COMPACT (max. 20 bar, 1 user)

**A mobile booster unit is the ideal solution for reaching hard to get to places. After you start it up, the pump will bring the water to the right working pressure. When opening the spray gun, a small drop in pressure occurs, starting the pump. If the water intake stops, the MLDC-COMPACT will be shut down after a set time. For foam cleaning, it is possible to affect the quantity of air using the reducing valve. The MLDC-COMPACT is frequency-controlled and suitable for rinsing and foaming activities.**

## Your benefits

- Practical and portable
- Grundfos quality pump
- Room for two jerrycans
- Economical with water
- Rugged construction



## Versions:

- ▶ MLDC-COMPACT-20  
Max. 20 bar working pressure\*  
1 user rinsing or  
1 user foaming  
Article number: 83302000

\* including 3 bar initial

# Case study

and technical information



*The control panel of the MLDC-COMPACT.*

## **Type**

Number of users	1 x rinsing or 1 x foaming
Working pressure / bar	8-20 (max.)*
Ltr / pump / minute	33
Ltr / total / minute	33
m <sup>3</sup> / total / hour	2
Pump brand	Grundfos
Pump type	CRIE
Power / kW	3
Number of pumps	1
Total power / kW	3
Electrical connection	3 x 400V / 50 or 60 Hz
Temperature in °C	70 (max.)
Width / mm	740
Depth / mm	990
Height / mm	1000
Connection in	Hose 19 x 27 mm
Connection out	1/2" ext.
Connection air	Hose 9 x 15 mm
Connection out	3/4" BSP ext.

# Booster unit

LDC-Q (max. 20 bar, up to 8 users)

**Once it is started up, the LDC-Q will bring your piping system to the right working pressure, enabling its users to start cleaning. When opening/closing one of the tap points, the LDC-Q will automatically start or switch to stand-by. The LDC-Q is easy to maintain, low noise and has adjustable feet.**

## Options and/or accessories

*The LDC-Q is optionally available with a stainless steel break tank, which creates certified backflow protection. The break tank also has a dirt trap that keeps the supply of water free from dirt.*

## Your benefits

- Energy saving through optimal pressure control
- Frequency-controlled pumps
- Very compact construction
- Available with break tank (backflow protection)



## Versions:

- ▶ LDC-Q 150/20 - 1 x 11 kW\*  
Max. 20 bar, max. 8 users  
Article number: 83303003
- ▶ LDC-Q 200/20 - 1 x 15 kW\*  
Max. 20 bar, max. 8 users  
Article number: 83303005
- ▶ LDC-Q 200/20 - 2 x 5.5 kW\*  
Max. 20 bar, max. 8 users  
Article number: 83303001

*The LDC-Q 200/20 with two 5.5 kW pumps*

*\* including 5 bar initial*

# Other designs

## and technical information



*The LDC-Q 200/20 with two 5.5 kW pumps and optional break tank.*

Type	LDC-Q 150/20 1 x 11 kW	LDC-Q 200/20 2 x 5.5 kW	LDC-Q 200/20 1 x 15 kW
Number of users	8	8	8
Working pressure / bar	20 (max.)	20 (max.)	20 (max.)
Ltr / pump / minute	240	133	266
Ltr / total / minute	240	266	266
m <sup>3</sup> / total / hour	15 (max.)	20 (max.)	25 (max.)
Pump brand	Grundfos	Grundfos	Grundfos
Pump type	CRIE	CRIE	CRIE
Power / kW	11	5.5	15
Number of pumps	1	2	1
Total power / kW	11	11	15
Switchboard	Plastic	Steel sheet	Steel sheet
Electrical connection	400V / 50-60 Hz	400V / 50-60 Hz	400V / 50-60 Hz
Fuse	3 x 32A	3 x 32A	3 x 40A
Temperature in °C	70	70 (max.)	70 (max.)
Width / mm	600	900	600
Depth / mm	600	850	600
Height / mm	1250	1150	1650
Connection in	2" int.	DN80 flange	2" int.
Connection out	1 1/2" BSP ext.	1 1/2" BSP ext.	1 1/2" BSP ext.
Break tank (optional)	120	160	160

# Booster unit

LDC-Q (max. 20 bar, from 12 users)

**Once it is started up, the LDC-Q will bring your piping system to the right working pressure, enabling its users to start cleaning. When opening/closing one of the tap points, the LDC-Q will automatically start or switch to stand-by. The LDC-Q is easy to maintain, low noise and has adjustable feet.**

## Options and/or accessories

*The LDC-Q is optionally available with a stainless steel break tank, which creates certified backflow protection. The break tank also has a dirt trap that keeps the supply of water free from dirt.*

## Your benefits

- Energy saving through optimal pressure control
- Frequency-controlled pumps
- Very compact construction
- Available with break tank (backflow protection)



*The LDC-Q 300/20 with four 5.5 kW pumps*

## Versions:

- ▶ LDC-Q 300/20 - 3 x 5.5 kW\*  
Max. 20 bar, max. 12 users  
Article number: 83303011
- ▶ LDC-Q 300/20 - 2 x 11 kW\*  
Max. 20 bar, max. 16 users  
Article number: 83303007
- ▶ LDC-Q 400/20 - 4 x 5.5 kW\*  
Max. 20 bar, max. 16 users  
Article number: 83303021
- ▶ LDC-Q 450/20 - 3 x 11 kW\*  
Max. 20 bar, max. 24 users  
Article number: 83303015

*\* including 5 bar initial*

# Case study

## and technical information



The LDC-Q 400/20 with four 5,5 kW pumps

Type	LDC-Q 300/20 3 x 5,5 kW	LDC-Q 300/20 2 x 11 kW	LDC-Q 400/20 4 x 5,5 kW	LDC-Q 450/20 3 x 11 kW
Number of users	12	16	16	24
Working pressure / bar	20 (max.)	20 (max.)	20 (max.)	20 (max.)
Ltr / pump / minute	133	240	133	240
Ltr / total / minute	399	480	532	720
m <sup>3</sup> / total / hour	30 (max.)	30 (max.)	40 (max.)	45 (max.)
Pump brand	Grundfos	Grundfos	Grundfos	Grundfos
Pump type	CRIE	CRIE	CRIE	CRIE
Power / kW	5,5	11	5,5	11
Number of pumps	3	2	4	3
Total power / kW	16,5	22	22	33
Switchboard	Steel sheet	Steel sheet	Steel sheet	Steel sheet
Electrical connection	400V / 50-60 Hz	400V / 50-60 Hz	400V / 50-60 Hz	400V / 50-60 Hz
Fuse	3 x 40A	3 x 50A	3 x 50A	3 x 80A
Temperature in °C	70 (max.)	70 (max.)	70 (max.)	70 (max.)
Width / mm	1100	1200	1500	1600
Depth / mm	850	1000	850	1000
Height / mm	1150	1250	1150	1250
Connection in	DN80 flange	DN100 flange	DN100 flange	DN100 flange
Connection out	2 1/2" BSP ext.	1 1/2" BSP ext.	2" BSP ext.	2" BSP ext.
Break tank (optional)	260	240	360	360

# Booster unit

MDC (max. 40 bar, from 3 users)

**Once it is started up, the MDC will bring your piping system to the right working pressure, enabling its users to start cleaning. When opening/closing one of the tap points, the MDC will automatically start or switch to stand-by. The MDC is easy to maintain, low noise and has adjustable feet. The pumps are arranged in series to achieve the final pressure of 40 bar.**

## Options and/or accessories

*The MDC is optionally available with a stainless steel break tank, which creates certified backflow protection. The break tank also has a dirt trap that keeps the supply of water free from dirt.*

## Your benefits

- Grundfos quality pump
- Backflow protection
- Economical with water
- Up to 16 users
- Available with break tank (backflow protection)



MDC 40/40

## Versions:

- ▶ MDC 40/40  
Max. 40 bar, max. 3 users  
Article number: 83401001
- ▶ MDC 80/40  
Max. 40 bar, max. 5 users  
Article number: 83401010
- ▶ MDC 160/40  
Max. 40 bar, max. 8 users  
Article number: 83402001
- ▶ MDC 240/40  
Max. 40 bar, max. 12 users  
Article number: 83402011
- ▶ MDC 320/40  
Max. 40 bar, max. 16 users  
Article number: 83402021

# Technical details



MDC 80/80 (left) next to an LDC-Q 100 with enclosure (right).

Type	MDC 40/40	MDC 80/40	MDC 160/40	MDC 240/40	MDC 320/40
Number of users	3	5	8	12	16
Working pressure / bar	40 (max.)	40 (max.)	40 (max.)	40 (max.)	40 (max.)
Ltr / pump / minute	67	133	133	133	266
Ltr / total / minute	67	133	366	399	532
m <sup>3</sup> / total / hour	5 (max.)	12 (max.)	24 (max.)	36 (max.)	48 (max.)
Pump brand	Grundfos	Grundfos	Grundfos	Grundfos	Grundfos
Pump type	CRNE	CRI + CRN	CRI + CRNE	CRI + CRNE	CRI + CRNE
Power / kW	7.5	7.5	7.5	7.5	7.5
Number of pumps	1	2	4	6	8
Total power / kW	7,5	15	30	45	60
Break tank / ltr	150	150	140	260	360
Switchboard made of	Steel sheet	Steel sheet	Steel sheet	Steel sheet	Steel sheet
Electrical connection	400V / 50 Hz	400V / 50 Hz	400V / 50 Hz	400V / 50 Hz	400V / 50 Hz
Fuse	3 x 25A	3 x 40A	3 x 80A	3 x 125A	3 x 160A
Temperature in °C	70 (max.)	70 (max.)	70 (max.)	70 (max.)	70 (max.)
Width / mm	785	1650	960	1280	1650
Depth / mm	465	780	1900	1900	1900
Height / mm	1150	1660	1850	2000	2150
Connection in	3/4" BSP int.	1 1/4" BSP int.	DN80 flange	DN80 flange	DN100 flange
Connection out	1 1/4" BSP int.	1 1/2" BSP int.	2 1/2" BSP ext.	2" BSP ext.	2" BSP ext.
Break tank (optional)	150	150	140	260	360

# Booster unit

WMRA (max. 80 bar, 1 user)

**Once it is started up, the WMRA will bring your piping system to the right working pressure, enabling its users to start cleaning. When opening/closing one of the tap points, the WMRA will automatically start or switch to stand-by.**

**The WMRA is easy to maintain, low noise and is easily accessible. The WMRA is mounted on the wall as standard and has an integrated break tank.**

## Options and/or accessories

*Also available mounted on a floor mounting frame.*

## Your benefits

- Temperature control
- Economical with water
- User-friendly
- Wall or floor mounting

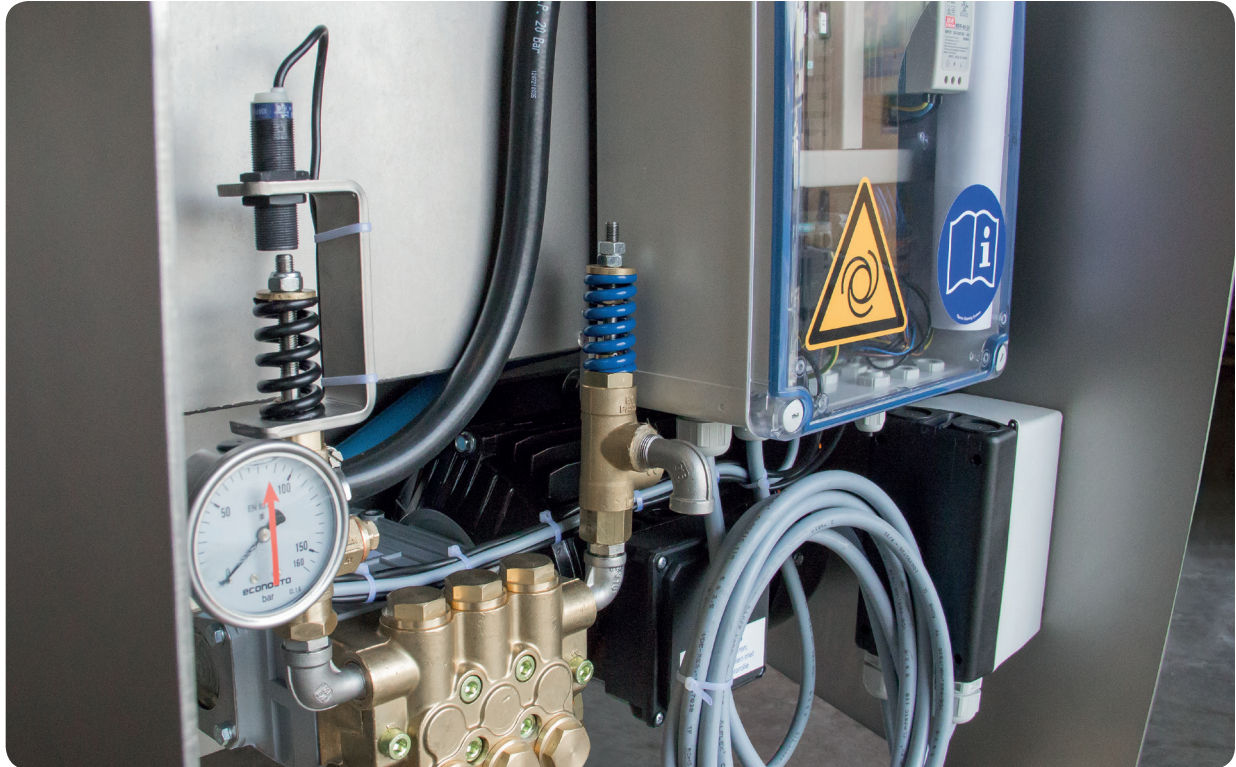


WMRA 60/21

## Versions:

- ▶ WMRA 60/21  
60 bar working pressure, 1 user  
Article number: 83301310
- ▶ WMRA 80/21  
80 bar working pressure, 1 user  
Article number: 83301300

# Technical details



*The inside of the of the WMRA 60/21.*

Type	WMRA 60/21	WMRA 80/21
Number of users	1	1
Working pressure / bar	60	80
Ltr / pump / minute	21	21
Ltr / total / minute	21	21
m <sup>3</sup> / total / hour	1.26	1.26
Pump brand	Speck	Speck
Pump type	NP 16/21-140	NP 16/21-140
Power / kW	4	4
Number of pumps	1	1
Total power / kW	4	4
Break tank / ltr	14	14
Electrical connection	400V / 50Hz	400V / 50Hz
Fuse	16A	16A
Temperature in °C	70 (max.)	70 (max.)
Width / mm	640	640
Depth / mm	470	470
Height / mm	840	840
Connection in	1/2"	1/2"
Connection out	1/2"	1/2"

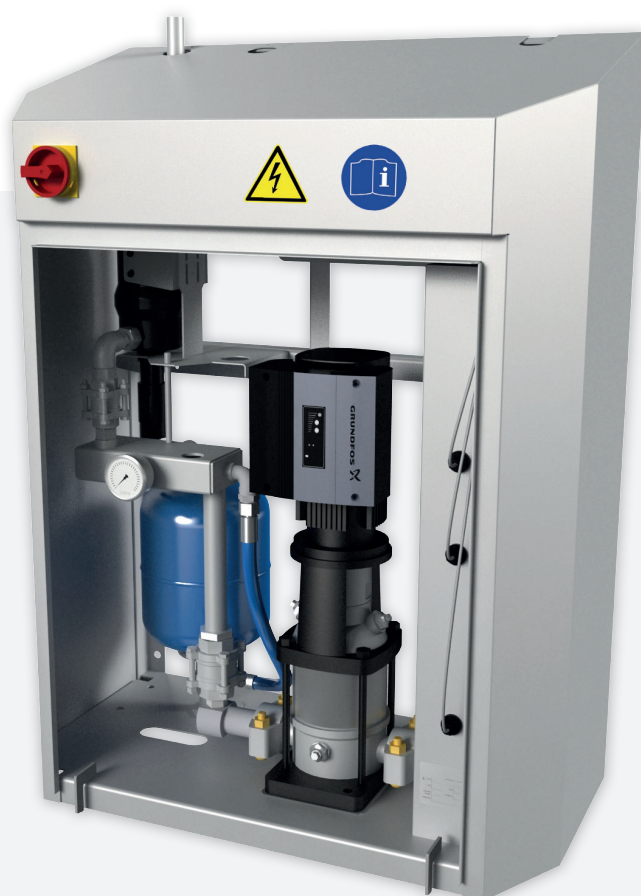
# Foam or disinfection unit

CF-Q / CD-Q (max. 8 bar, from 4 users)

**The CF-Q/CD-Q is the ideal unit for efficient foaming or disinfecting activities. Once you start it up, the CF-Q/CD-Q will bring your piping system to the right working pressure. When opening/closing one of the tap points, the CF-Q/CD-Q will automatically start or switch to stand-by. By means of a break tank the installation has certified backflow protection. A dirt catcher in the supply line filters the water, preventing unnecessary breakdowns. The CF-Q and CD-Q series is available with electrically controlled (E) or water-powered (W) dosing pumps.**

## Your benefits

- Temperature control
- Solid construction
- Start/stop system
- Economical with water
- Steady dosing



CF-Q 5W

## Versions:

- ▶ CF-Q 4E  
4 x foaming  
Article number: 83604005
- ▶ CF-Q 6E  
6 x foaming  
Article number: 83604015
- ▶ CD-Q 5E  
6 x disinfecting  
Article number: 83604016

---

- ▶ CF-Q 5W  
5 x foaming  
Article number: 83604014
- ▶ CD-Q 5W  
5 x disinfecting  
Article number: 83604017

# Case study

## and technical information



*The CF-Q 6E enables up to 6 users to foam at the same time.*

Type	CF-Q 4E	CF-Q 6E	CD-Q 5E	CF-Q 5W	CD-Q 5W
Dosing pump drive unit	Electrical	Electrical	Electrical	Water	Water
Number of users foaming	4	6	-	5	-
Number of users disinfecting	-	-	5	5	5
Working pressure / bar	8 (max.)	8 (max.)	8 (max.)	8 (max.)	8 (max.)
Ltr / pump / minute	50	50	50	50	50
Pump brand	Grundfos	Grundfos	Grundfos	Grundfos	Grundfos
Pump type	CRIE	CRIE	CRIE	CRIE	CRIE
Cap. foam pump ltr / minute	1,5	2,33	-	1,7	-
Dosing foam pump	2 - 4 %	2 - 4 %	-	2 - 4 %	-
Cap. disinfection pump ltr / minute	-	-	0,83	-	0,85
Disinfection dosing	-	-	0,5 - 2%	-	0,5 - 2%
Total power / kW	1,5	1,5	1,5	1,1	1,1
Break tank / ltr	30	30	30	30	30
Electrical connection	400V / 50 Hz	400V / 50 Hz	400V / 50 Hz	400V / 50 Hz	400V / 50 Hz
Fuse	3 x 16A	3 x 16A	3 x 16A	3 x 16A	3 x 16A
Temperature in °C	70 (max.)	70 (max.)	70 (max.)	38 (max.)	38 (max.)
Width / mm	1050	1050	1050	1050	1050
Depth / mm	480	480	480	480	480
Height / mm	1170	1170	1170	1170	1170
Connection in	3/4" ext.	3/4" ext.	3/4" ext.	3/4" ext.	3/4" ext.
Connection out	3/4" ext.	3/4" ext.	3/4" ext.	3/4" ext.	3/4" ext.

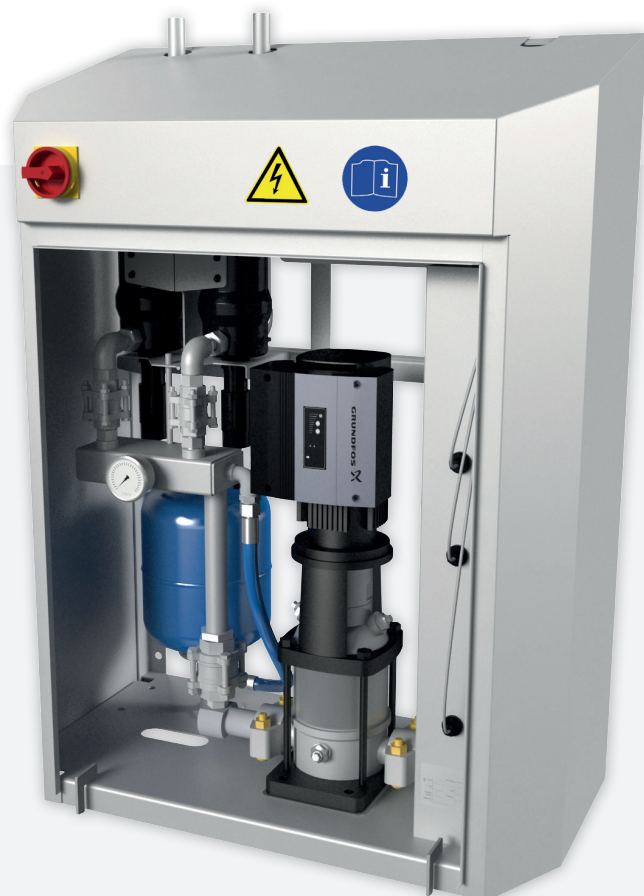
# Foam and disinfection unit

CFD-Q (max. 8 bar, from 4 users)

The CFD-Q is the ideal unit for efficient foaming and disinfecting activities. Once you start it up, the CFD-Q will bring your piping system to the right working pressure. When opening/closing one of the tap points, the CFD-Q will automatically start or switch to stand-by. By means of a break tank the installation has certified backflow protection. A dirt catcher in the supply line filters the water, preventing unnecessary breakdowns. The CFD-Q series is available with electrically controlled (E) or water-powered (W) dosing pumps.

## Your benefits

- Level indicator
- Start/stop system
- Reduces risk of infection
- Compact construction



CFD-Q 32W

## Versions:

- ▶ CFD-Q 22E  
2 x foaming, 2 x disinfecting  
Article number: 83601006
- ▶ CFD-Q 42E  
4 x foaming, 2 x disinfecting  
Article number: 83601016
- ▶ CFD-Q 64E  
6 x foaming, 4 x disinfecting  
Article number: 83601026
- ▶ CFD-Q 32W  
3 x foaming, 2 x disinfecting  
Article number: 83601014
- ▶ CFD-Q 55W  
5 x foaming, 5 x disinfecting  
Article number: 83601024

# Case study

## and technical information



The CFD-Q 64E enables its users to foam and disinfect.

Type	CFD-Q 22E	CFD-Q 42E	CFD-Q 64E	CFD-Q 32W	CFD-Q 55W
Dosing pump drive unit	Elektrisch	Elektrisch	Elektrisch	Water	Water
Number of users foaming	2	4	6	3	5
Number of users disinfecting	2	2	4	2	5
Working pressure / bar	8 (max.)	8 (max.)	8 (max.)	8 (max.)	8 (max.)
Ltr / pump / minute	50	50	100	50	100
Pump brand	Grundfos	Grundfos	Grundfos	Grundfos	Grundfos
Pump type	CRIE	CRIE	CRIE	CRIE	CRIE
Cap. foam pump ltr / minute	0,83	1,5	2,33	1,02	1,7
Dosing foam pump	2 - 4%	2 - 4%	2 - 4%	2 - 4%	2 - 4%
Cap. disinfection pump ltr / minute	0,42	0,42	0,83	0,51	0,85
Disinfection dosing	0,5 - 2%	0,5 - 2%	0,5 - 2%	0,5 - 2%	0,5 - 2%
Total power / kW	1,5	1,65	2,75	1,1	2,2
Break tank / ltr	30	30	30	30	30
Electrical connection	400V / 50 Hz	400V / 50 Hz	400V / 50 Hz	400V / 50 Hz	400V / 50 Hz
Fuse	3 x 16A	3 x 16A	3 x 16A	3 x 16A	3 x 16A
Temperature in °C	70 (max.)	70 (max.)	70 (max.)	38 (max.)	38 (max.)
Width / mm	1050	1050	1050	1050	1050
Depth / mm	480	480	480	480	480
Height / mm	1170	1170	1170	1170	1170
Connection in	3/4" ext.	3/4" ext.	3/4" ext.	3/4" ext.	3/4" ext.
Connection out	2 x 3/4" ext.	2 x 3/4" ext.	2 x 3/4" ext.	2 x 3/4" ext.	2 x 3/4" ext.

# Decentral satellites

## Blocksat RF / RFD

**The Blocksat is extremely effective. The user-friendly selector lever makes it easy to choose between rinsing, foaming or disinfecting. By means of a rotary knob, it is possible to regulate the amount of air and adjust the composition of the foam. The Blocksat satellites are very compact and extremely rugged due to the solid enclosure.**

### Options and/or accessories

*Optionally available with lances and nozzle holder. The Blocksat is also available with a standpipe and/or jerrycan holder.*

### Your benefits

- Long service life
- Very compact and practical
- Adjustable foam composition
- Only one selector lever



*Blocksat RFD*



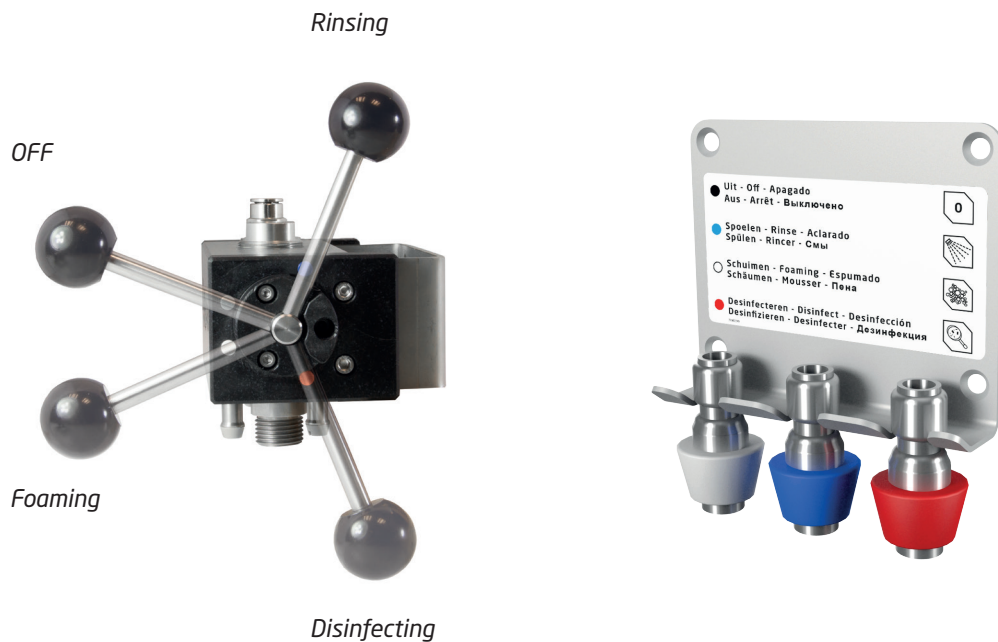
*Blocksat RF*

### Versions:

- ▶ Blocksat RF  
Hand operated  
Rinsing and foaming  
Article number: 83801240
- ▶ Blocksat RFD  
Hand operated  
Rinsing, foaming and disinfecting  
Article number: 83801250

# Other designs

## and technical information



*The Blocksat RFD; rinse, foam or disinfect at the flick of a wrist. Lances are optional.*

Type	Blocksat RF	Blocksat RFD
Working pressure water supply / bar	15 - 40	15 - 40
Working pressure air supply / bar	6 - 8	6 - 8
Width / mm	157	198
Depth / mm	173	173
Height / mm	154	205
Connection disinfection	10 mm hose connector	10 mm hose connector
Connection foam	10 mm hose connector	10 mm hose connector
Connection water	3/8" int.	3/8" int.
Connection air	1/4" int.	1/4" int.

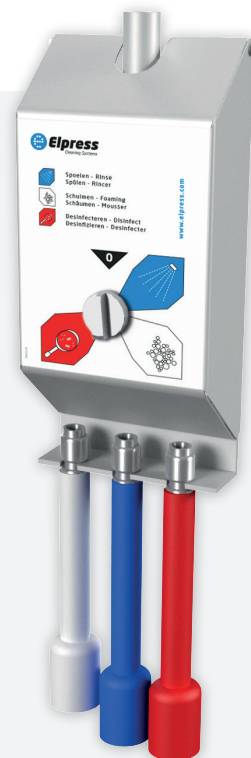
# Central satellites

AC / HC

**When the right ball valve is opened or the right switch is chosen, the cleaning activities can start. By means of a pressure reducer on the air pipe, it is possible to add less or more air to adjust the composition of the foam. The satellites have a hygienic construction and are mounted to the wall.**

## Your benefits

- Hygienic housing
- Adjustable foam composition
- Safe working with chemicals
- No need to carry around jerrycans
- Very simple operation



## Versions:

AC 35-B  
Pneumatic operation  
Article number: 83801030

AC 45-B  
Pneumatic operation  
Article number: 83801040

HC 35-B  
Manual operation  
Article number: 83801050

HC 45-B  
Manual operation  
Article number: 83801060

*Control panel of the AC 45-B*

# Case study

## and technical information



Control panel of satellite AC 45-B; the satellite is hidden away above the ceiling.

Type	AC 35-B	AC 45-B	HC 35-B	HC 45-B
Working pressure rinsing / bar	40 (max.)	40 (max.)	80 (max.)	80 (max.)
Working pressure foaming / disinf. / bar	6-8	6 - 8	6 - 8	6 - 8
Width / mm	290	400	475	475
Depth / mm	235	195	185	185
Height / mm	205	205	508	508
Connection in	3/8" int.	3/8" int.	3/8" int.	3/8" int.
Connection out	1/2" ext.	1/2" ext.	1/2" ext.	1/2" ext.
Connection air	1/4" int.	1/4" int.	1/4" int.	1/4" int.

# Mobile cleaning tanks

foaming and disinfecting

**The sturdy and mobile cleaning tanks enable you to foam or disinfect easily wherever compressed air is available.**

**The tanks are PED certified and have a TÜV certified safety valve.**

**Standard design comprises:**

- Clincher, foaming and disinfecting lance
- 10 metre hose for foaming or disinfecting
- 10 metre hose for air supply

**Your benefits**

- Solid
- Great portability
- TÜV certified safety valve
- Stainless steel
- Reduces risk of infection



*Disinfection tank MF-20*

**Versions:**

- ▶ MF-20  
Disinfecting tank  
Article number:  
83901020
- ▶ S50-B  
Foaming tank  
Article number:  
83901050

# Other designs

and technical information

---



*Foaming tank S50-B.*

Type	MF-20	S50-B
Working pressure disinf. / bar	6 (max.)	-
Working pressure foaming / bar	-	6 (max.)
Tank capacity / ltr	20	50
Working temperature / °C	5 - 40	5 - 40
Width / mm	260	600
Depth / mm	480	600
Height / mm	930	1250
Weight / kg	12	28
Connection air	Hose pillar	Hose pillar

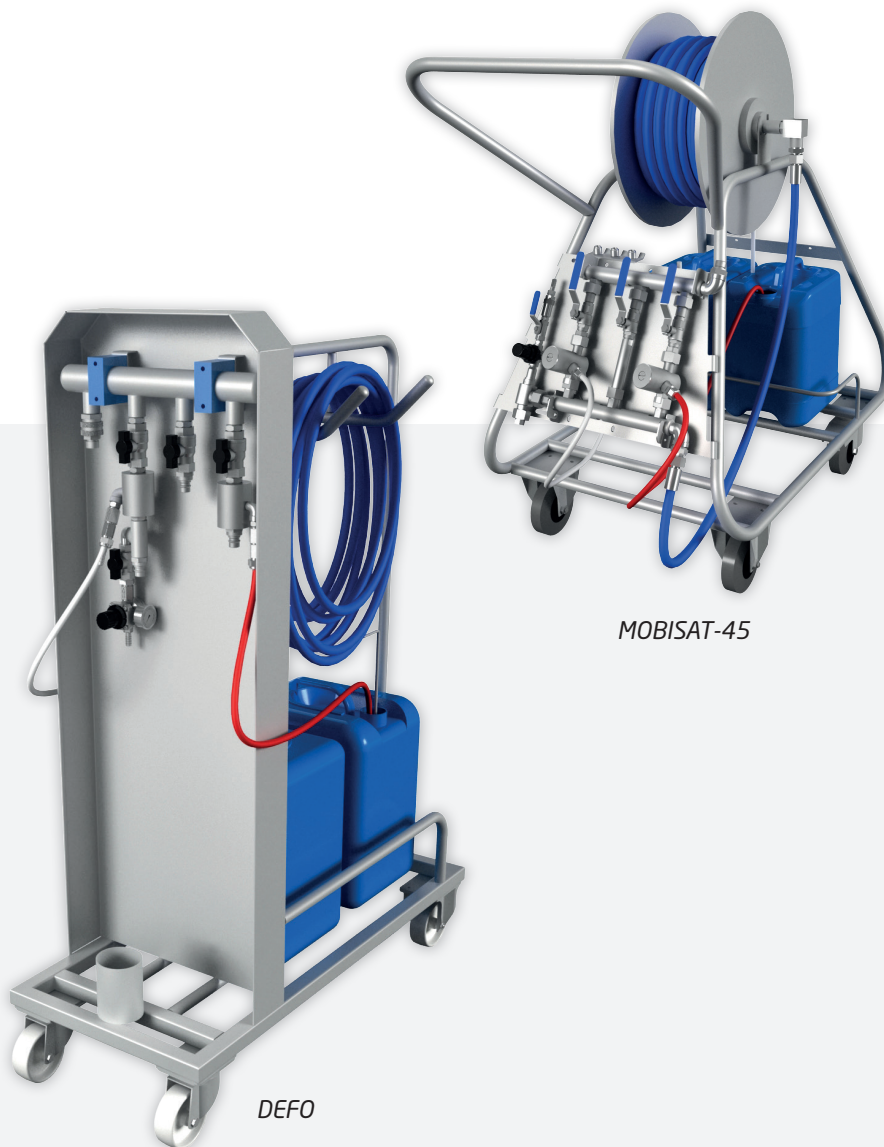
# Mobile satellites

flexible and multifunctional

**Mobile satellites are perfectly equipped for flexible rinsing, foaming and/or disinfecting activities. They are suitable for several accessories, such as a hose, spray gun, lances and two jerrycans. The two turnable and two braked wheels give the MOBISAT excellent stability. Thanks to the smart frame construction, the DEFO is suited for small passageways and walkways.**

## Your benefits

- Mobile rinsing, foaming or disinfecting
- Hygienic working progress
- Compact frame construction
- Improved mobility



DEFO

MOBISAT-45

## Versions:

- ▶ DEFO  
Rinsing, foaming and disinfecting  
Article number: 84001020
- ▶ DEFO with accessory set  
Rinsing, foaming and disinfecting  
Article number: 84001030
- ▶ MOBISAT-35\*  
Rinsing and foaming  
Article number: 84001035
- ▶ MOBISAT-45\*  
Rinsing, foaming and disinfecting  
Article number: 84001045
- ▶ EHW-000  
Accessory trolley  
Article number: 84001000

\* standard delivery without accessories.

# Case study

and technical information



*The DEFO in practice, excellent foam quality.*

Type	DEFO	MOBISAT-35	MOBISAT-45	EHW-000
Number of users	1	1	1	-
Working pressure / bar	60 (max.)	80 (max.)	80 (max.)	-
Operating temperature / °C	65 (max.)	65 (max.)	65 (max.)	-
Water consumption / ltr / minute	30 (max.)	30 (max.)	30 (max.)	-
Width / mm	400	600	600	600
Depth / mm	900	1150	1150	1150
Height / mm	1258	1095	1095	1095
Weight / kg	33	60	60	55

# Hose reels and cleaning hoses

## Type EHR

User-friendly self-winding hose reel (316 SS). Suitable for various pressures and applications. Hose lengths ranging from 5 to 35 metres, depending on the type of hose. Can be used for high and low pressures (maximum 200 bar). The maximum water temperature is 150 °C.

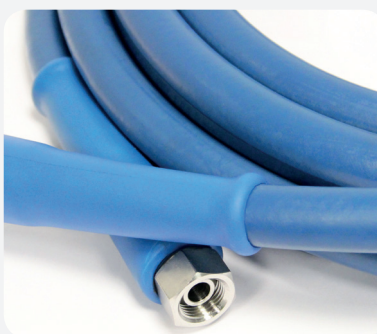


Art. No.	Type	Max. hose length/m			In	Out	Pressure Max. bar	Weight Kg	Dimensions to wall/mm		
		3/8	1/2	3/4					Height	Depth	Width
75850700	EHR10	10	10	-	1/2" ext.	1/2" int.	200	13	480	500	250
75850701	EHR15	15	15	-	1/2" ext.	1/2" int.	200	18	480	500	250
75850702	EHR20	20	20	-	1/2" ext.	1/2" int.	200	18	480	500	280
75850703	EHR25/35	25/35	25/35	-	1/2" ext.	1/2" int.	200	26	600	590	310
75850716	EHR30-19	-	-	30	1" ext.	1" ext.	20	18	430	550	260
75850714	EHR30S	35	30	-	1/2" ext.	1/2" ext.	200	36	550	530	360
75850717	EHR60S	60	60	-	1/2" ext.	1/2" ext.	200	50	590	590	590



### FDA Elpress Clean Hose®

Working pressure: Max. 200 bar  
 Temperature: Max. 100 °C  
 Diameter: 1/2"



### MP-Blue

Working pressure: Max. 100 bar  
 Temperature: Max. 150 °C  
 Diameter: 1/2"



### HP-Blue

Working pressure: Max. 330 bar  
 Temperature: Max. 150 °C  
 Diameter: 3/8" - 1/2"

# Spray guns

## Spray gun ST3100

Working pressure: 60 bar  
 Output: 100 ltr / min  
 Temperature: Max. 150 °C  
 Material: Stainless steel, with delayed closure  
 Suitable for: Cleaning and foaming (centre pressure)

Art. No.	Inlet	Outlet	Weight
75900010	1/2" BSP int.	Quick coupling A	1300 gr

*Provided with quick coupling type A*



## Spray gun ST3300

Working pressure: 150 bar  
 Output: 100 ltr / min  
 Temperature: Max. 150 °C  
 Material: Stainless steel  
 Suitable for: Cleaning and foaming (high pressure)

Art. No.	Inlet	Outlet	Weight
75900011-1	1/2" BSP int.	Quick coupling A	1156 gr

*Provided with quick coupling type A*



## Clincher ESC

Working pressure: 65 bar  
 Output: 100 ltr / min  
 Temperature: Max. 100 °C  
 Material: Stainless steel  
 Suitable for: Foaming (and low pressure)

Art. No.	Inlet	Outlet	Weight
75900099-1	1/2" ext.	Quick coupling A	653 gr



## Spray gun ST2000

Working pressure: 275 bar  
 Output: 45 ltr / min  
 Temperature: Max. 150 °C  
 Material: Bronze  
 Suitable for: High pressure

Art. No.	Inlet	Outlet	Weight
75900018	3/8" BSP int.	1/4" int.	730 gr



# Lances

## Elpress lances

Working pressure: 150 bar  
 Temperature: Max. 150 °C  
 Material: Stainless steel, with grease resistant rubber grip

Art. No.	Description	Inlet	Outlet	Length	Colour	Weight
75900262*	Rinsing lance	Adapter Type A	1/4" M	230 mm	Blue	196 gr
75900263*	Disinfection lance	Adapter Type A	1/4" M	230 mm	Red	196 gr
75900264**	Foam lance	Adapter Type A	Nozzle	230 mm	White	191 gr

\* Supplied exclusively with interchangeable

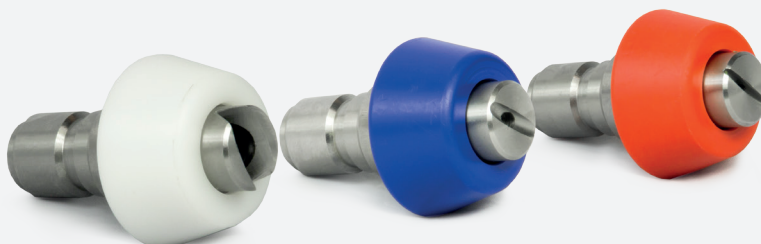


## Elpress lances - short model

Working pressure: 20 bar  
 Temperature: Max. 150 °C  
 Material: Stainless steel, with plastic protection

Art. No.	Description	Inlet	Outlet	Length	Colour	Weight
75900282**	Rinsing lance	Adapter Type A	Nozzle	60 mm	Blue	115 gr
75900283**	Disinfection lance	Adapter Type A	Nozzle	60 mm	Red	115 gr
75900284**	Foam lance	Adapter Type A	Nozzle	60 mm	White	100 gr

\*\* nozzle not changeable



# Reel and hose sets

## Hose sets with accessories

Compositions:

- Cleaning hose
- Spray gun or clincher



84201110

Art. No.	Hose type	Hose length	Max. pressure	Output	Spray gun
		mtr	bar	ltr / minute	
84201111	FDA Elpress Clean Hose ®	25	65	100	Clincher ESC
84201131	FDA Elpress Clean Hose ®	25	60	100	ST-3100
84201110	MP-Blue	25	65	100	Clincher ESC
84201130	MP-Blue	25	60	100	ST-3100
84201152	HP-Blue	25	65	100	Clincher ESC
84201153	HP-Blue	25	60	100	ST-3100
84201150	HP-Blue	25	150	45	ST-3300

## Hose sets with accessories

Compositions:

- Hose reel (with double spring pack)
- Swivel
- Cleaning hose
- Spray gun or clincher
- Coupling hose (2 metres)



84201010

Art. No.	Reel type	Hose type	Hose length	Max. pressure	Output	Spray gun
			mtr	bar	ltr / minute	
84201011	EHR-25/35	FDA Elpress Clean Hose ®	25	65	100	Clincher ESC
84201031	EHR-25/35	FDA Elpress Clean Hose ®	25	60	100	ST-3100
84201010	EHR-25/35	MP-Blue	25	65	100	Clincher ESC
84201030	EHR-25/35	MP-Blue	25	60	100	ST-3100
84201052	EHR-25/35	HP-Blue	25	65	100	Clincher ESC
84201053	EHR-25/35	HP-Blue	25	60	100	ST-3100
84201050	EHR-25/35	HP-Blue	25	150	45	ST-3300

# Accessories

---



## **Swivel brackets**

Suitable for EHR reels.

All are made from high-quality stainless steel and are to be fixed to the wall.



## **Hose holder**

made from stainless steel.

With two hooks for items such as a spray gun.

Article number: 83701110



## **Jerrycan holder EKH20**

made from stainless steel.

Suitable for one jerrycan with a capacity of 20 litres.

Article number: 83701100





Elpress is the leading specialist in the field of industrial hygiene. We focus on the delivery of total solutions: customer-focused systems that are expertly integrated into your business process. By simplifying processes and sharing our knowledge, our wide product range enables us to add value to your business.

Years of experience has led to high-quality products. Reliability and user-friendliness have been proven in practice. Thanks to the broad possibilities of our products, we offer a solution for every challenge.

We have a Passion for Hygiene!

#### **Elpress BV**

Handelstraat 21  
Industriegebied Saxe Gotha  
NL-5831 AV Boxmeer  
Tel.: +31 (0)485 51 69 69  
Fax: +31 (0)485 51 40 22  
E-mail: [sales@elpress.com](mailto:sales@elpress.com)  
Website: [www.elpress.com](http://www.elpress.com)



visit our website