



*industrial
washing systems*



*quality equipment,
securing maximum hygiene*

Since 1976



Passion for Hygiene

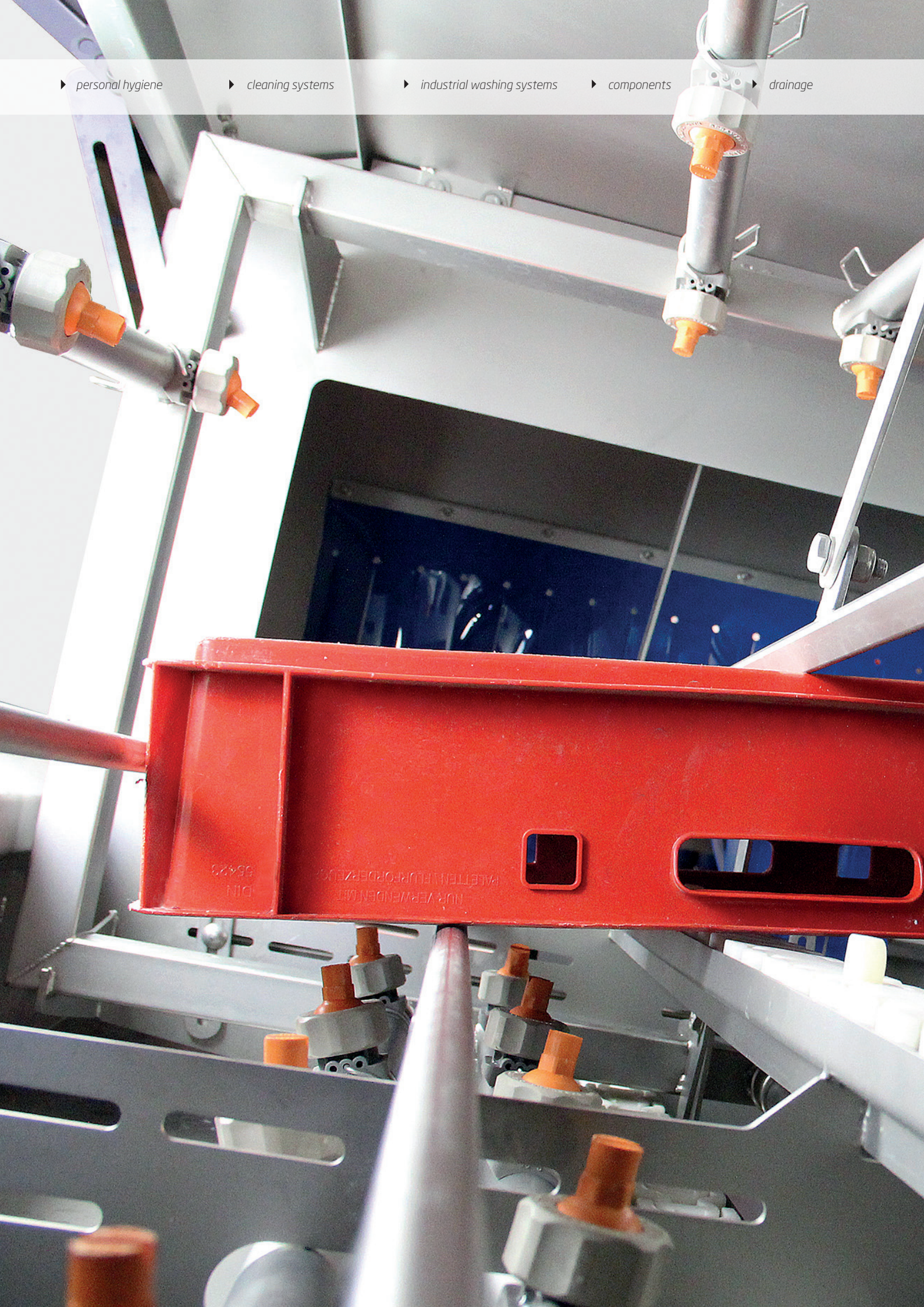
▶ personal hygiene

▶ cleaning systems

▶ industrial washing systems

▶ components

▶ drainage



DIN
95428

NUR VERWENDELT
FÜR ALLE ANFORDERUNGEN

▶ development

▶ manufacturing

▶ sales

▶ service

▶ total solutions

Take advantage of our knowledge

Elpress is the leading specialist in the field of industrial hygiene. We focus on delivering total solutions: customer-focused systems, professionally integrated into your business process. By simplifying processes and sharing our knowledge, our wide product range enables us to add value to your business. Take advantage of our knowledge and let one of our specialists advise you.



Industrial washing systems

efficient, cost-saving and reliable

Elpress is the leading specialist in the field of industrial hygiene. We focus on delivering total solutions: customer-focused systems, professionally integrated into your business process. By simplifying processes and sharing knowledge, we can add value to your business with a complete range of products.

Industrial washing systems

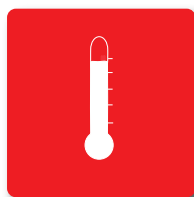
Our industrial washing systems let you clean load carriers such as crates, pallets or boxes. Our systems are economical with the use of water, energy and cleaning agents. For efficient management of costs and the environment. Moreover, our installations are user-friendly and ergonomically responsible. The Elpress washing systems are of proven quality. Thinking ahead is in our DNA. Thinking ahead, but with proven principles.

Service

Service is our keyword. After you invest in our products, we continue to work with you. For maintenance and/or repairs, our daily operating mobile service vans carry the right equipment and knowledge on board. This enables us to provide you with optimal disposal in the short and long term. A complete package of solutions, therefore, always with a strong focus on you as our customer. Elpress is an ambitious organisation, and we can justifiably say we have a passion for hygiene!

Our development principles

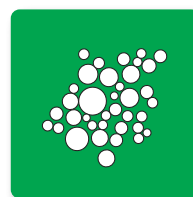
The four basic elements of our approach:



Temperature



Time



Chemicals



Mechanical force



"To be the first choice for hygienic products, by developing leading solutions and providing added value while spreading our knowledge and passion for hygiene"

Conditions

Nothing in this document may be copied, published or disseminated in any other way without the written permission of Elpress BV. The information in this brochure has been compiled with care, and no rights may be derived from it. Articles, details and colours on the displayed images can differ from the actual products.

For the most recent information, please visit our website:

www.elpress.com

Product categories

one-stop-shopping



Personal hygiene

Maximum control of infection risks.
Functional, high-quality and hygienically designed.



Cleaning systems

Elpress cleaning systems have set the standard in the area of cleaning business and production areas since 1988.



Industrial washing systems

Efficient, cost-saving and reliable cleaning of your load carriers such as crates, pallets and boxes.



Components

All peripheral equipment that is used in a cleaning process. By maintenance contract or on demand. We maintain fast delivery times.



Drainage

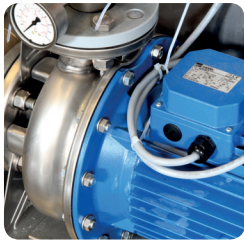
Elpress drains and gutters are of excellent and proven quality.

Index

Quality and safety	8
Areas of application	10
Load carriers	11
Crate washers and blow off units	
EKW-1500	12
EKW-2500	14
EKW-3500	16
EKW-5000	18
EKW-6000	20
EKW-7000	22
EAB-ST	24
Options and accessories	26
Bin washers	
ENW-20	30
ENW-20 Plus	30
Options and accessories	36
Box washer	
EDW-20	32
Options and accessories	36
Pallet washer	
EPW-45	34
Options and accessories	36
Utensil washers	
Utensil washers	37

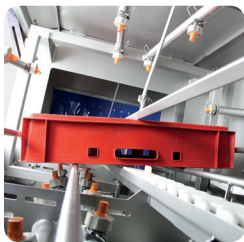
Quality and safety

are important to us



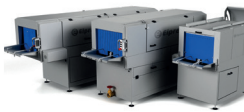
Quality IE pumps

Our industrial washing systems contain high-quality IE pumps. These pumps produce a higher output than conventional pumps.



Rinse sensors

To avoid wasting water unnecessarily, our rinse zones are equipped with sensors that detect the presence of crates. If none is detected, the arch will stop in order to save water.



Modular structure

Thanks to their modular structure, Elpress washers are available in many sizes. Depending on the room, washing capacity and how long the crate remains in the washer, our experts and resellers can tell you which type of washer is recommended for your purposes.



Safety provisions

Our industrial washing systems are equipped with proven safety devices. For example, the system will shut down when someone opens the maintenance doors or when the pumps are about to run dry.



Stainless steel

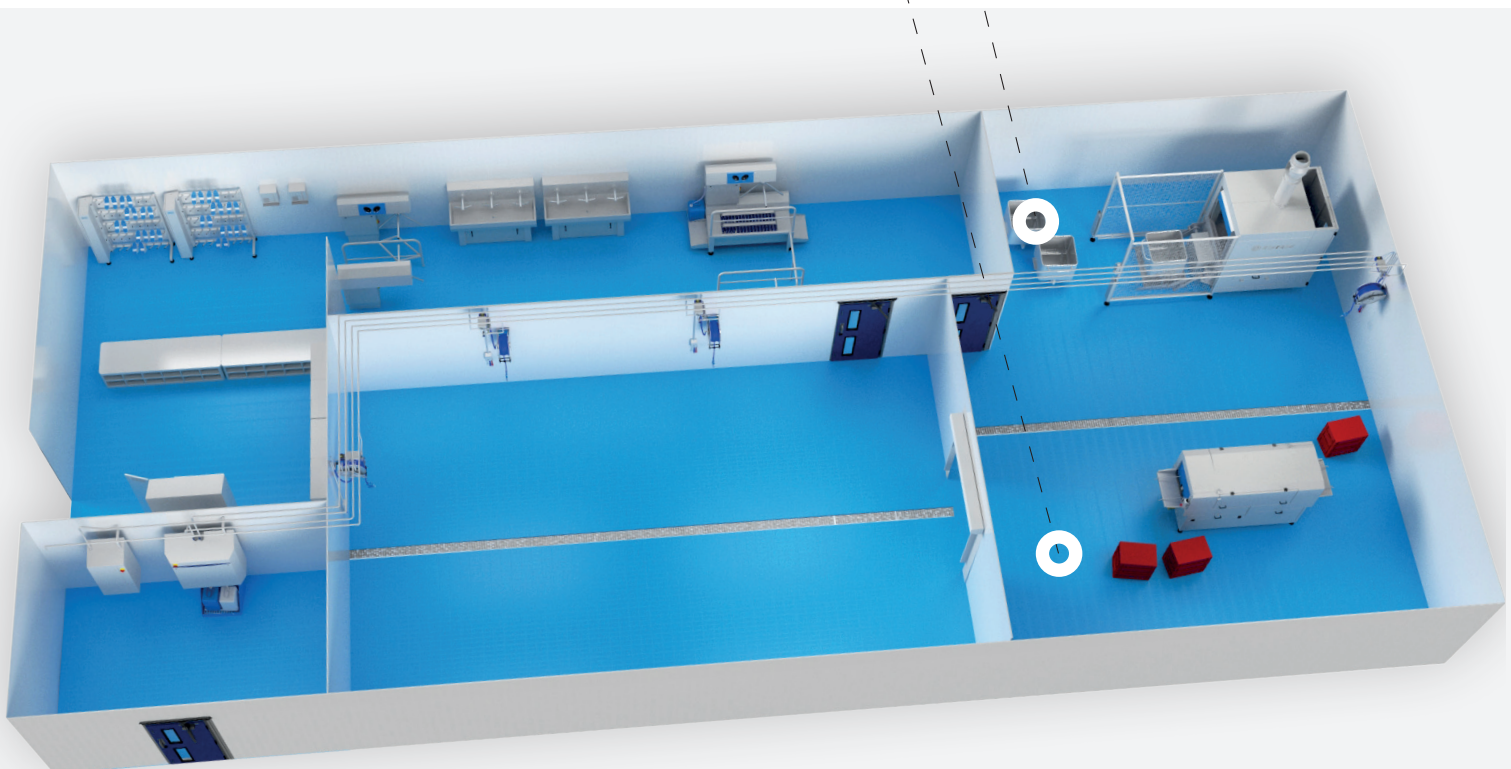
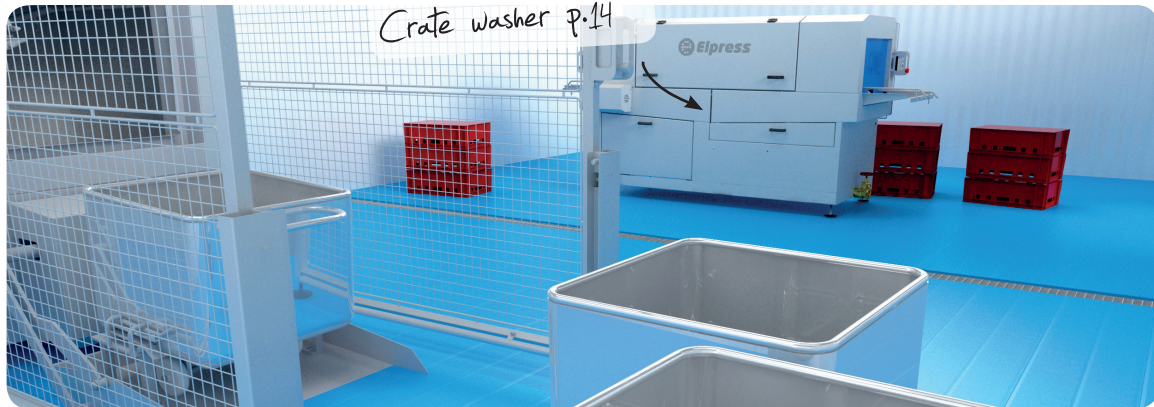
The stainless steel we produce is processed by means of ceramic blasting. This results in a more hygienic surface roughness than, for example, the polishing or brushing of stainless steel. Our surface roughness of only 0.8 μm is ideal for the food industry.



Accessibility

High degrees of accessibility ensure that the washing systems can be easily approached for cleaning and maintenance purposes. In addition, the control panels have an uncomplicated and efficient design.

Industrial washroom



Areas of application

our industrial washing systems have a wide range of uses



Meat and fish industry

Our washing systems are used where the focus is on the slaughtering, further processing, enrichment, packaging and distribution of animals, such as beef cattle, pigs, chickens and fish. The predominant types of contamination are blood, fat, proteins and combinations of these, each of which needs to be dealt with in a specific way.



Bakeries

In this industry, the focus is on washing and drying systems for small and large bread production lines, patisserie, (dough) finished products and semi-manufactured goods. The predominant types of contamination are dough, fat and chocolate residues (sugar). Elpress also supplies systems for the washing of pans and baking moulds.



PVF

The processing, packing and distribution of potatoes, vegetables and fruit. The (further) processing of these products makes them susceptible to attack by bacteria, which emphasises how important it is to clean and dry the crates and containers properly. Types of contaminant include starch, sugars and fruit acids.



Dairy

The treatment, processing, packing and distribution of dairy-related products. Our washing systems are used both for raw milk products and in the further processing industry, such as the cheese and ice-cream industries. Contaminants that arise during production processes mainly consist of proteins and fats.



Confectionery

In the confectionery industry, our systems are particularly popular for the processing of liquorice, chocolate and sweets. The contaminants that are found here include sugar, syrup and dough residues.



Logistics

In this industry, Elpress washing systems are predominantly used in logistics (cask pool) organisations. This service industry is noted for a wide range of contaminants and crate/container types, with the focus being on achieving the right level of hygiene and a low cost price per crate.

Passion for Hygiene

Load carriers

crates, bins, casks, pallets, vats, moulds, standard containers...

The customer-specific standard

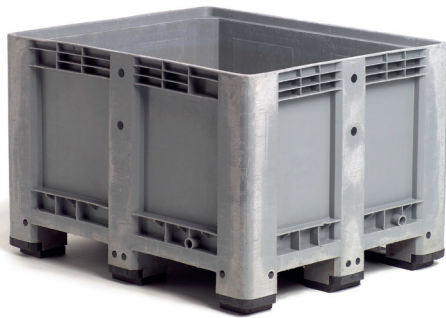
Process simplification comes high on our agenda. Our industrial washing systems have a modular structure. Their design also takes account of a wide range of different load carriers. This enables us to make our standard washing systems more customer-specific in return for an attractive investment.



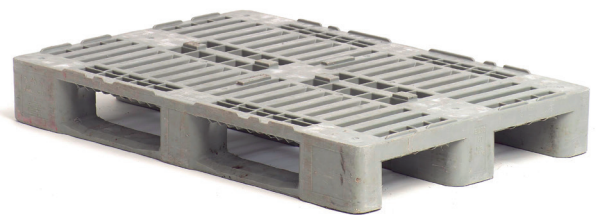
CBL



E2 crate



Pallet box



H1 pallet



EPS crate



Poulterer's crate

Crate washer

EKW-1500



Overview

- Suitable for crates with maximum dimensions of 600 x 400 mm (based on E-crates).
- The capacity of this unit is a maximum of 170 crates per hour with a staying time of 45 seconds.
- The crates are passed through the unit with a track width of 600 mm.
- The maximum crate height is 410 mm.

Safety

- Emergency stop on control panel.
- Water level switch in wash tank to prevent the pumps from running dry.
- Protective cap over rotating parts.

Versions:

- ▶ EKW-1500
Main wash & rinse zone
Article number:
83101125

Case study

and technical information



The EKW-1500, with optional one-person operation.

General

Voltage	400V - 50Hz / 3 phase / earth
Fuse / A	3 x 25 (from)
Transport chain	Plastic
Drive / kW	0.18
Water consumption/ ltr / crate	0.3 - 0.5
Length / mm	2462
Width / mm	1184
Height / mm	1649

Per zone

Length / mm	1500
Tank capacity / ltr	180
Output per pump / kW	1x 3.0
Pump capacity / m3 / hour	24
Nozzles	Stainless steel
Filter	Filter tray
Water connection	3/4"
Overflow	2"
Drain	3"

Main wash zone

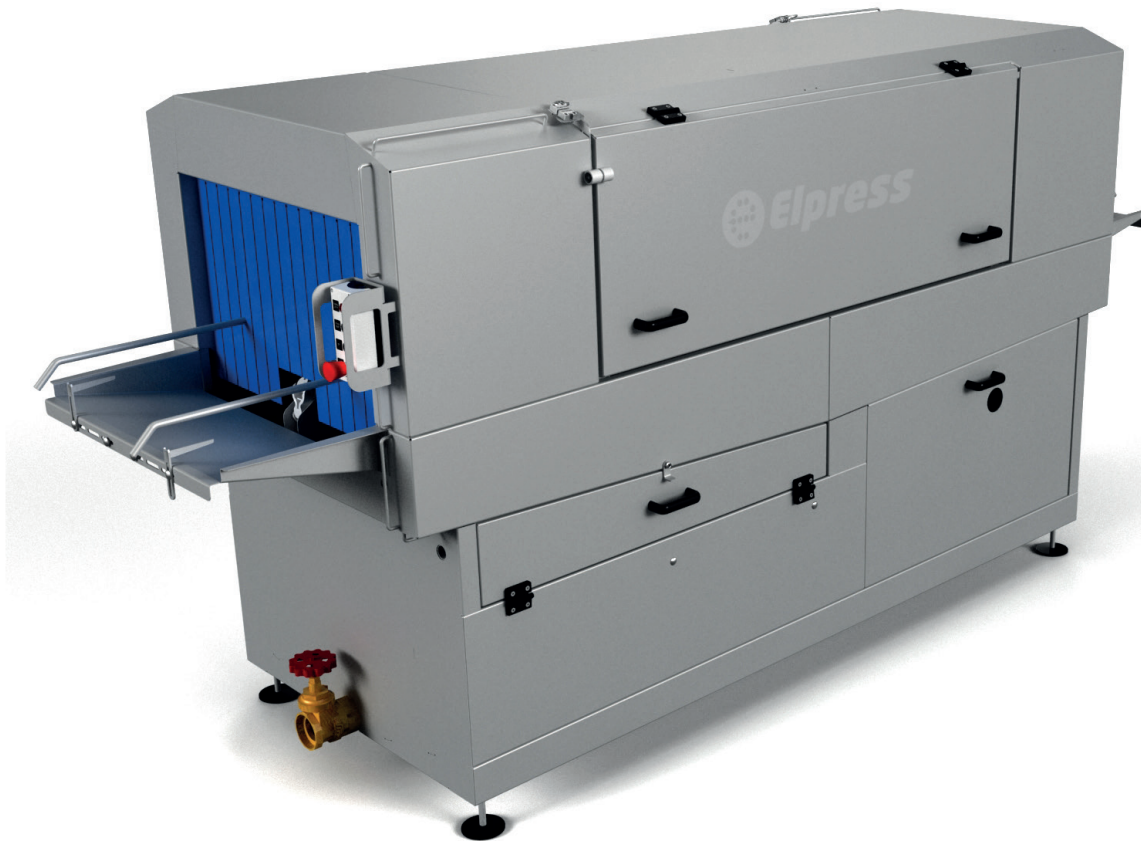
Length / mm	1500
Tank capacity / ltr	180
Output per pump / kW	1x 3.0
Pump capacity / m3 / hour	24
Nozzles	Stainless steel
Filter	Filter tray
Water connection	3/4"
Overflow	2"
Drain	3"

Rinse zone

Length / mm	Integrated
Tank capacity / ltr	-
Output per pump / kW	-
Pump capacity / m3 / hour	-
Nozzles	-
Filter	-
Water connection	1/2"
Overflow	-
Drain	-

Crate washer

EKW-2500



Overview

- Suitable for crates with maximum dimensions of 600 x 400 mm (based on E-crates).
- The capacity of this unit is a maximum of 400 crates per hour with a staying time of 45 seconds.
- The crates are passed through the unit with a track width of 400 or 600 mm.
- The maximum crate height is 300 mm.

Safety

- Emergency stop on control panel.
- Water level switch in wash tank to prevent the pumps from running dry.
- Protective cap over rotating parts.

Versions:

- ▶ EKW-2500
Main wash & rinse zone
Article number:
83101150
- ▶ EKW-2500 + EAB-1-ST
Main wash, rinse
& blow-off zone
Article number:
83101151

Case study

and technical information

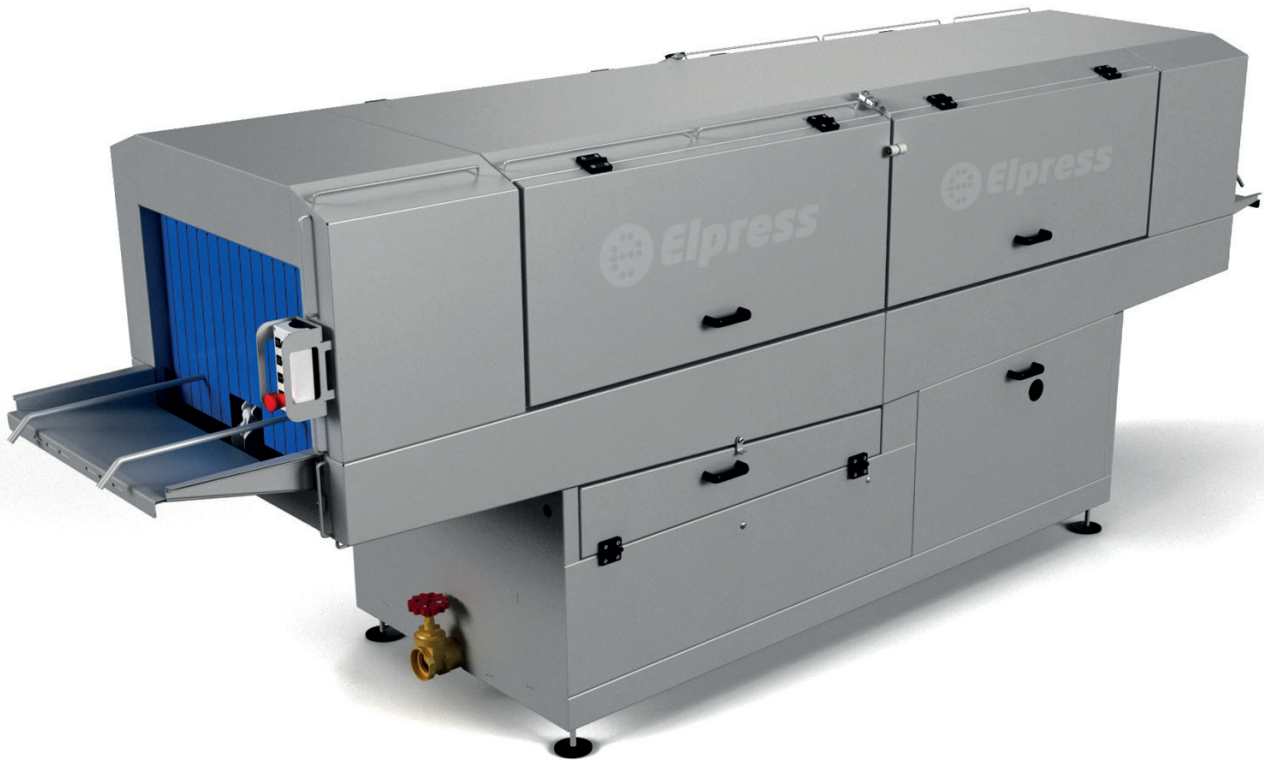


The EKW-2500.

General	EKW-2500	EKW-2500 + EAB-1-ST	
Voltage	400V - 50Hz / 3 phase / earth	400V - 50Hz / 3 phase / earth	
Fuse / A	3 x 25 (from)	3 x 25 (from)	
Transport chain	Plastic	Plastic	
Drive / kW	0.18	0.18	
Water consumption/ ltr / crate	0.3 - 0.5	0.3 - 0.5	
Length / mm	3390	5907	
Width / mm	1231	1616	
Height / mm	1600	1600	
Per zone	Main wash zone	Rinse zone	Blow-off zone
Length / mm	2500	Integrated	2500
Tank capacity / ltr	300	-	-
Power per pump / kW	1 x 5.5	-	-
Capacity / m3 / hour	42	-	1500 m3 at 6000 Pa
Nozzles	Plastic click-nozzles	-	-
Filter	Filter tray	-	-
Water connection	1/2"	1/2"	-
Overflow	2 1/2"	-	-
Drain	3"	-	1/2"
Power per fan			1 x 5,5

Crate washer

EKW-3500



Overview

- Suitable for crates with maximum dimensions of 600 x 400 mm (based on E-crates).
- The capacity of this unit is a maximum of 560 crates per hour with a staying time of 45 seconds.
- The crates are passed through the unit with a track width of 400 or 600 mm.
- The maximum crate height is 300 mm.

Safety

- Emergency stop on control panel.
- Water level switch in wash tank to prevent the pumps from running dry.
- Protective cap over rotating parts.

Versions:

- ▶ EKW-3500
Main wash & rinse zone
Article number:
83101350
- ▶ EKW-3500 + EAB-1-ST
Main wash, rinse
& blow-off zone
Article number:
83101351

Case study

and technical information



The EKW-3500, with optional one-person operation.

General	EKW-3500	EKW-3500 + EAB-1-ST	
Voltage	400V - 50Hz / 3 phase / earth	400V - 50Hz / 3 phase / earth	
Fuse / A	3 x 25 (from)	3 x 25 (from)	
Transport chain	Plastic	Plastic	
Drive / kW	0.18	0.18	
Water consumption/ ltr / crate	0.3 - 0.5	0.3 - 0.5	
Length / mm	4389	6888	
Width / mm	1231	1616	
Height / mm	1600	1600	
Per zone	Main wash zone	Rinse zone	Blow-off zone
Length / mm	3500	Integrated	2500
Tank capacity / ltr	300	-	-
Power per pump / kW	1 x 7.5	-	-
Capacity / m3 / hour	48	-	1500 m3 at 6000 Pa
Nozzles	Plastic click-nozzles	-	-
Filter	Filter tray	-	-
Water connection	1/2"	1/2"	-
Overflow	2 1/2"	-	-
Drain	3"	-	1/2"
Power per fan			1 x 5.5

Crate washer

EKW-5000



Overview

- Suitable for crates with maximum dimensions of 600 x 400 mm (based on E-crates).
- The capacity of this unit is a maximum of 800 crates per hour with a staying time of 45 seconds.
- The crates are passed through the unit with a track width of 400 or 600 mm.
- The maximum crate height is 300 mm.

Safety

- Emergency stop on control panel.
- Water level switch in wash tank to prevent the pumps from running dry.
- Protective cap over rotating parts.

Versions:

- ▶ EKW-5000
Pre-wash, main wash & rinse zone
Article number:
83101650
- ▶ EKW-5000 + EAB-2-ST
Pre-wash, main wash, rinse & blow-off zone
Article number:
83101651

Case study

and technical information



The EKW-5000, easy adjustment and replacement of nozzles.

General	EKW-5000	EKW-5000 + EAB-2-ST		
Voltage	400V - 50Hz / 3 phase / earth	400V - 50Hz / 3 phase / earth		
Fuse / A	3 x 32 (from)	3 x 50 (from)		
Transport chain	Plastic	Plastic		
Drive / kW	0.18	0.18		
Water consumption/ ltr / crate	0.3 - 0.5	0.3 - 0.5		
Length / mm	5889	8389		
Width / mm	1231	1616		
Height / mm	1600	1600		
Per zone	Pre-wash zone	Main wash zone	Rinse zone	Blow-off zone
Length / mm	2500	2500	Integrated	2500
Tank capacity / ltr	300	300	-	-
Power per pump / kW	1 x 5.5	1 x 5.5	-	-
Capacity / m3 / hour	42	42	-	3000 m3 at 6000 Pa
Nozzles	Plastic click-nozzles	Plastic click-nozzles	-	-
Filter	Filter tray	Filter tray	-	-
Water connection	1/2"	1/2"	1/2"	-
Overflow	2 1/2"	2 1/2"	-	-
Waste	3"	3"	-	1/2"
Power per fan	-	-	-	2 x 5,5

Crate washer

EKW-6000



Overview

- Suitable for crates with maximum dimensions of 600 x 400 mm (based on E-crates).
- The capacity of this unit is a maximum of 960 crates per hour with a staying time of 45 seconds.
- The crates are passed through the unit with a track width of 400 or 600 mm.
- The maximum crate height is 300 mm.

Safety

- Emergency stop on control panel.
- Water level switch in wash tank to prevent the pumps from running dry.
- Protective cap over rotating parts.

Versions:

- ▶ EKW-6000
Pre-wash, main wash & rinse zone
Article number:
83101750
- ▶ EKW-6000 + EAB-2-ST
Pre-wash, main wash, rinse & blow-off zone
Article number:
83101751

Case study

and technical information



The EKW-6000, the filter tray is easy to take out.

General

Voltage	EKW-6000 400V - 50Hz / 3 phase / earth	EKW-6000 + EAB-2-ST 400V - 50Hz / 3 phase / earth
Fuse / A	3 x 32 (from)	3 x 63 (from)
Transport chain	Plastic	Plastic
Drive / kW	0.18	0.18
Water consumption/ ltr / crate	0.3 - 0.5	0.3 - 0.5
Length / mm	6888	9388
Width / mm	1231	1616
Height / mm	1600	1600

Per zone

	Pre-wash zone	Main wash zone	Rinse zone	Blow-off zone
Length / mm	2500	3500	Integrated	2500
Tank capacity / ltr	300	300	-	-
Power per pump / kW	1 x 5.5	1 x 7.5	-	-
Capacity / m3 / hour	42	48	-	3000 m3 at 6000 Pa
Nozzles	Plastic click-nozzles	Plastic click-nozzles	-	-
Filter	Filter tray	Filter tray	-	-
Water connection	1/2"	1/2"	1/2"	-
Overflow	3"	3"	-	-
Waste	3"	3"	-	1/2"
Power per fan	-	-	-	2 x 5,5

Crate washer

EKW-7000



Overview

- Suitable for crates with maximum dimensions of 600 x 400 mm (based on E-crates).
- The capacity of this unit is a maximum of 1120 crates per hour with a staying time of 45 seconds.
- The crates are passed through the unit with a track width of 400 or 600 mm.
- The maximum crate height is 300 mm.

Safety

- Emergency stop on control panel.
- Water level switch in wash tank to prevent the pumps from running dry.
- Protective cap over rotating parts.

Versions:

- ▶ EKW-7000
Pre-wash, main wash & rinse zone
Article number:
83101850
- ▶ EKW-7000 + EAB-2-ST
Pre-wash, main wash, rinse & blow-off zone
Article number:
83101851

Case study

and technical information



The EKW-7000, close-up of the control panel.

General

	EKW-7000	EKW-7000 + EAB-1-ST
Voltage	400V - 50Hz / 3 phase / earth	400V - 50Hz / 3 phase / earth
Fuse / A	3 x 40 (from)	3 x 63 (from)
Transport chain	Plastic	Plastic
Drive / kW	0.18	0.18
Water consumption/ ltr / crate	0.3 - 0.5	0.3 - 0.5
Length / mm	7888	10388
Width / mm	1231	1616
Height / mm	1600	1600

Per zone

	Pre-wash zone	Main wash zone	Rinse zone	Blow-off zone
Length / mm	3500	3500	Integrated	2500
Tank capacity / ltr	300	300	-	-
Power per pump / kW	1 x 7.5	1 x 7.5	-	-
Capacity / m3 / hour	48	48	-	3000 m3 at 6000 Pa
Nozzles	Plastic click-nozzles	Plastic click-nozzles	-	-
Filter	Filter tray	Filter tray	-	-
Water connection	1/2"	1/2"	1/2"	-
Overflow	3"	3"	-	-
Waste	3"	3"	-	1/2"
Power per fan	-	-	-	2 x 5,5

Blow off units

EAB-ST



Overview

- The air blades produce a powerful 'cutting' air flow that blows excess water off the crates.
- The EAB-ST can be used as a modular option after a standard EKW crate washer.
- The blower units contain powerful 5.5 kW motors with a capacity of 1500 m³ at 6000 Pa.
- The motors are safely hidden away in the stainless steel enclosure.

Versions:

- ▶ EAB-1-ST*
1 fan
Article number: 83107010
- ▶ EAB-2-ST*
2 fans
Article number: 83107020

** Also available as an execution with thermocell housing.*

Case study

and technical information



The inner workings of the EAB-1-ST, the air blades 'cut' the residual water from the crate.

General

Voltage
Fuse / A
Transport chain
Drive / kW
Length / mm
Width / mm
Height / mm
Number of fans
Power per pump / kW
Capacity / m³ / hour
Drain

EAB-1-ST

400V - 50Hz / 3 phase / earth
Dependent on EKW
Plastic
0.18
2500
1231
1600
1
5.5
1500 m³ at 6000 Pa
1/2"

EAB-2-ST

400V - 50Hz / 3 phase / earth
Dependent on EKW
Plastic
0.18
2500
1231
1600
2
5.5
3000 m³ at 6000 Pa
1/2"

Options and accessories

EKW serie



Dosing pump for cleaning or rinsing agent



Vapour extraction



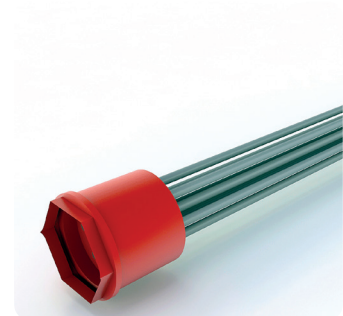
Adjustable speed of transport chain through frequency controller



Steam injection



Hot water coil



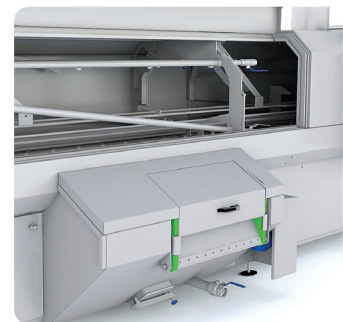
Electrical element



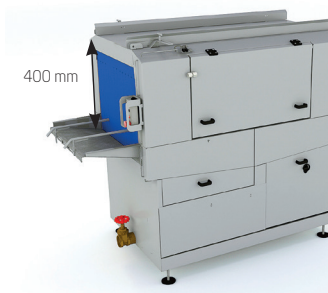
One-person operation



Infeed and outfeed conveyor



Rotating wedge-wire filter



Increased crate height crates up to 400 mm



Mobile version



Digital thermometer

Options and accessories

EKW serie

Article number	Description	Model					
		1500	2500	3500	5000	6000	7000
83109110	Dosing pump for cleaning agent	✓	✓	✓	✓	✓	✓
83109120	Dosing pump for rinse agent	✓	✓	✓	✓	✓	✓
83109021	Vapour extraction		✓	✓	✓	✓	✓
83109002	Heating by steam injection - max. 8 bar		✓	✓	✓	✓	✓
83109005	Heating by hot water coil		✓	✓	✓	✓	✓
83109012	Heating by electrical element - 12 kW	✓					
83109015	Heating by electrical element - 20 kW		✓	✓	✓	✓	✓
83109020	Heating by electrical element - 30 kW		✓	✓	✓	✓	✓
83109150	Mobile version	✓	✓	✓			
83108025	Adjustable speed of transport chain - frequency controller - 20 - 70 Hz		✓	✓	✓	✓	✓
83109050	Digital thermometer		✓	✓	✓	✓	✓
83101049	One-person operation EKW-1500	✓					
83101050	One-person operation EKW-2500		✓				
83101051	One-person operation EKW-3500			✓			
83108000	Infeed conveyor with transport rollers - 1 metre		✓	✓	✓	✓	✓
83108010	Outfeed conveyor with transport rollers - 1 metre		✓	✓	✓	✓	✓
78800255	Plastic crate guides EKW-1500	✓					
78800254	Plastic crate guides EKW-2500/3500		✓	✓			
78800248	Plastic crate guides EKW-5000/6000/7000				✓	✓	✓
83108080	Rotating wedge-wire filter		✓	✓	✓	✓	✓
83108081	Wedge-wire filter tray		✓	✓	✓	✓	✓
83108055	Increased crate height: crates up to 400 mm EKW-2500/3500		✓	✓			
83108065	Increased crate height: crates up to 400 mm EKW-5000/6000/7000				✓	✓	✓
83107005	Upgrade from EAB-1-ST to EAB-2-ST blower unit		✓	✓			



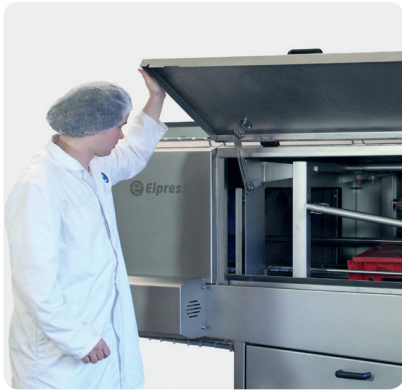
Plastic crate guides

Case studies

EKW series



◀ One-person operation



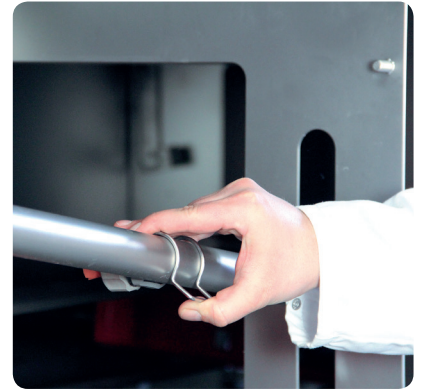
◀ Practical wing doors



◀ Solid plastic chain



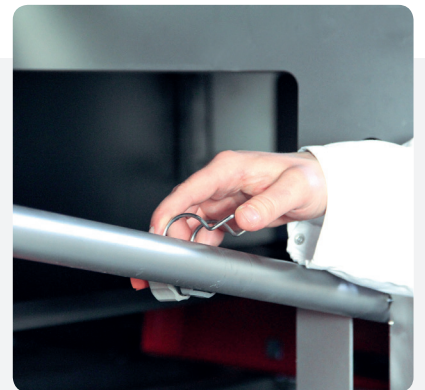
◀ Accessible filter tray



Click-nozzles ▶
Step 1



Click-nozzles ▶
Step 2



Click-nozzles ▶
Step 3



Click-nozzles ▶
Step 4

Case studies

EKW series



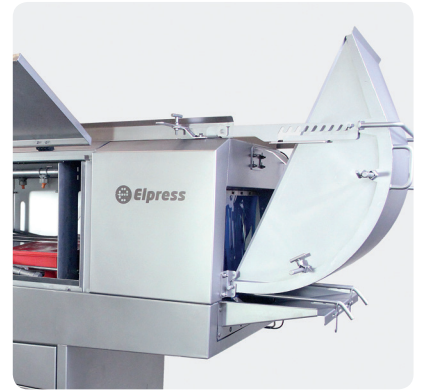
◀ One-person operation;
adjustable and removable

Inserting crates during ▶
one-person operation



◀ Vapour extraction

One-person operation ▶



◀ EKW-3500 in practice

EKW interior ▶



◀ EKW 2500 with vapour extraction

EKW 3500 with one-person operation ▶



Bin washers

ENW-20 / ENW-20 Plus



Overview

- Capacity of 20 bins per hour.
- Dimensions of the bins as per DIN 9797:
 - 200 litre - 790 x 675 x 700 mm (lxwxh)
 - 300 litre - 790 x 675 x 950 mm (lxwxh)
- The ENW Plus has an external filter and insulated wash tank.

Safety

- Bin detection by means of sensors on the safety railings.
- Emergency stop on control panel and safety railing.
- Water level switch in wash tank to prevent the pumps from running dry.
- Protective cap over rotating parts.

Versions:

- ▶ ENW-20
Main wash & rinse program
Article number:
83103005
- ▶ ENW-20 Plus
Main wash & rinse program
Article number:
83103000

Case study

and technical information



The ENW-20 Plus.

General

Voltage
Fuse / A
Drive / kW
Controller
Length / mm
Width / mm
Height / mm
Length including safety fence / mm
Power of pump / kW
Pump capacity / m³ / hour
Tank capacity / ltr
Nozzles
Filter
Water connection
Overflow
Waste
Manhole / mm
Water consumption/ ltr / bin
Isolation tank

ENW-20

400V - 50Hz / 3 phase / earth
3 x 25 (from)
1 x 0.25 - 1 x 0.18
Siemens LOGO + display
1720
1530
1950
3620
7,5
48
400
Stainless steel
Filter tray
2 x 1/2"
2 1/2"
3"
-
5
Single

ENW-20 Plus

400V - 50Hz / 3 phase / earth
3 x 32 (from)
1 x 0.37 - 1 x 0.18
Siemens LOGO + display
1880
1930
2340
3680
7,5
48
740
Stainless steel
External wedge-wire
1 x 1/2" + 1 x 3/4"
3"
2"
230 x 180
5
Double

Box washer

EDW-20



Overview

- Capacity of 20 boxes per hour.
- Dimensions of the boxes:
 - 1200 x 800 x 800 mm (lxwxh)
 - 1200 x 1000 x 800 mm (lxwxh)
- Can be adjusted to the desired cleaning level by means of options.

Versions:

- ▶ EDW-20
Main wash & rinse program
Article number:
83104000

Safety

- Box detection by means of sensors on the safety railings.
- Emergency stop on control panel and safety railing.
- Water level switch in wash tank to prevent the pumps from running dry.
- Protective cap over rotating parts.

Case study

and technical information



The EDW-20.

General

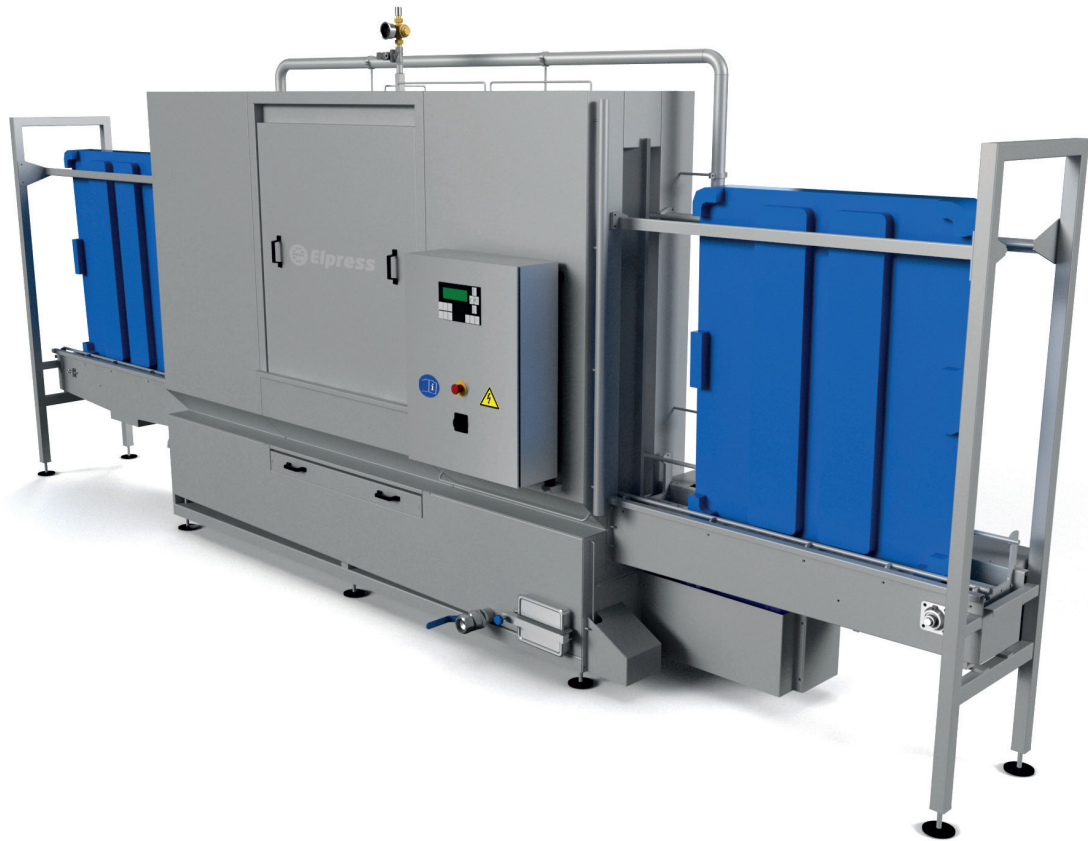
Voltage
Fuse / A
Drive / kW
Controller
Length / mm
Width / mm
Height / mm
Length including safety fence / mm
Power of pump / kW
Pump capacity / m³ / hour
Tank capacity / ltr
Nozzles
Filter
Water connection
Overflow
Drain
Manhole / mm
Water consumption/ ltr / box
Isolation tank

EDW-20

400V - 50Hz / 3 phase / earth
3 x 32 (from)
1 x 0.37 - 1 x 0.18
Siemens PLC + KTP 600 (panel)
1820
2600
2450
3900
11
72
740
Stainless steel
External wedge-wire filter
3/4"
2 1/2"
3"
230 x 180
5
Double

Pallet washer

EPW-45



Overview

- Capacity of 70 pallets per hour.
- Dimensions of the pallets:
 - 1200 x 800 x 120 mm (lxwxh)
 - 1200 x 1000 x 120 mm (lxwxh)
- Can be adjusted to the desired cleaning level by means of options.

Safety

- Emergency stop on control panel and safety railing.
- Water level switch in wash tank to prevent the pumps from running dry.
- Protective cap over rotating parts.

Versions:

- ▶ EPW-45
Main wash & rinse zone
Article number:
83105000

Case study

and technical information



The EPW-45 with automated feed and removal.

General

Voltage
Fuse / A
Drive / kW
Controller
Length / mm
Width / mm
Height / mm
Infeed height of pallets / mm
Power of pump / kW
Pump capacity / m³ / hour
Tank capacity / ltr
Nozzles
Filter
Water connection
Overflow
Waste
Manhole / mm
Water consumption/ ltr / pallet

EPW-45

400V - 50Hz / 3 phase / earth
3 x 32 (from)
0.55
Siemens LOGO + display
5900
917
2226
700
5.5
48
280
Stainless steel
Filter tray
3/4"
40 mm
2"
230 x 180
6

Options and accessories

ENW / EDW / EPW series



Dosing pump for cleaning or rinsing agent



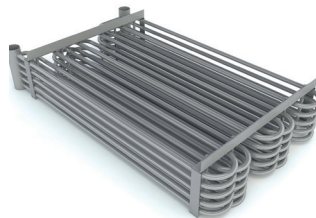
Vapour extraction



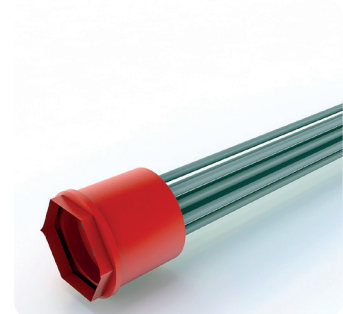
Norm bin frame for EDW-20



Steam injection



Hot water coil

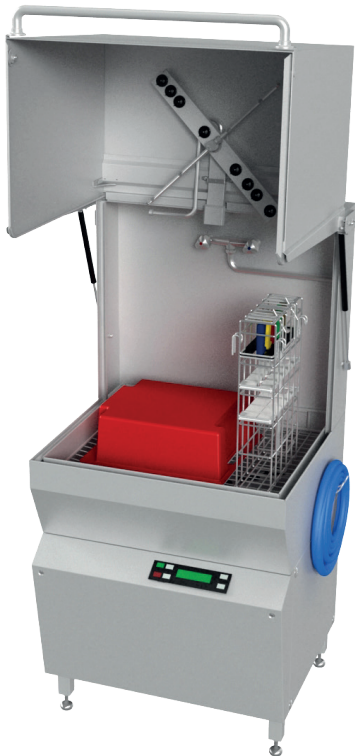


Electrical element

Article number	Description
83109110	Dosing pump for cleaning agent
83109120	Dosing pump for rinse agent
83109217	Vapour extraction
83109002	Heating by steam injection - max. 8 bar
83109005	Heating by hot water coil
83109015	Heating by electrical element - 20 kW
83109020	Heating by electrical element - 30 kW
83104306	Norm bin frame for EDW-20

Utensil washers

ETW-10 / ETW-15



► Wash volume ETW-10:
610 x 690 x 635 mm (hxwxd)



► Wash volume ETW-15:
610 x 810 x 635 mm (hxwxd)

General

	ETW-10	ETW-15
Width / mm	842	962
Depth / mm	745	745
Height closed / mm	1631	1631
Height open / mm	2088	2088
Electrical connection	400 V / PE / 50 Hz	400 V / PE / 50 Hz
Power / kW	8.5	9.5
Volume of wash tank / ltr	60	60
Capacity / ltr / minute	600	600
Volume of wash tank / ltr	13	13
Cleaning time / sec	20	20
Rinse water temperature / °C	85	85
Water consumption per cleaning cycle / ltr	6	3
Water connection	½"	½"
Nett weight (without water) / kg	175	185

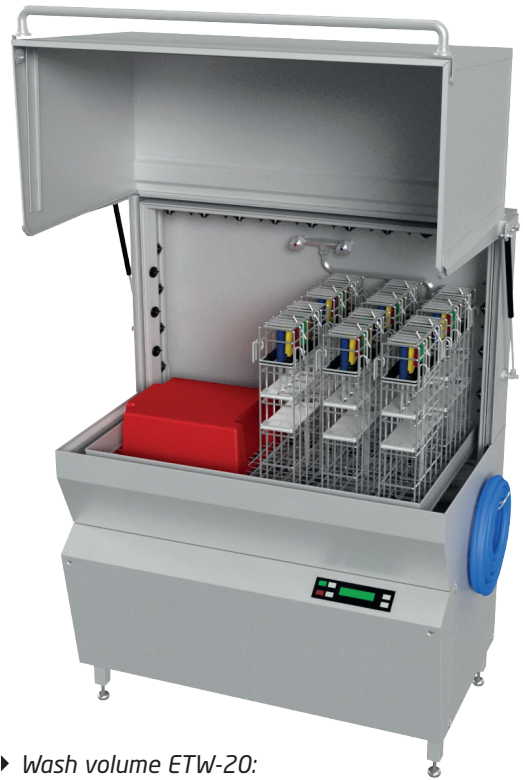
The utensil washer can optionally be equipped with soap dispenser, integrated mixer tap and an external hose.

Utensil washers

ETW-17 / ETW-20



► Wash volume ETW-17:
640 x 810 x 635 mm (hxwxd)



► Wash volume ETW-20:
645 x 1010 x 635 mm (hxwxd)

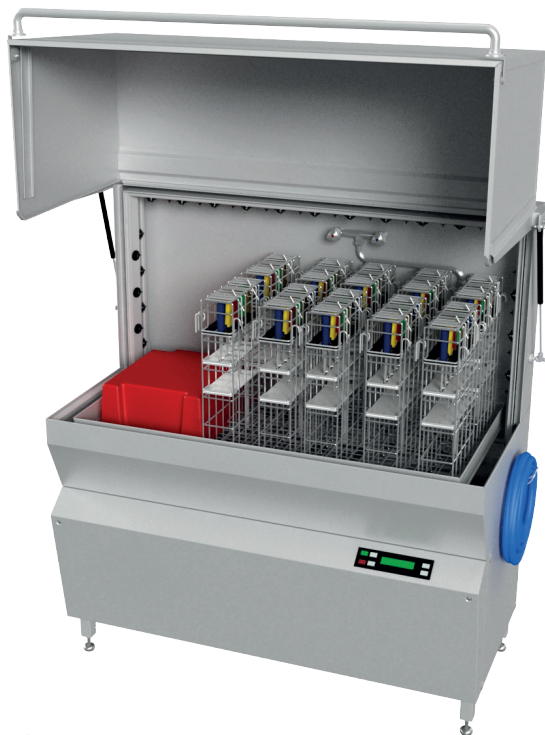
General

	ETW-17	ETW-20
Width / mm	1082	1280
Depth / mm	745	745
Height closed / mm	1631	1631
Height open / mm	2088	2088
Electrical connection	400 V / PE / 50 Hz	400 V / PE / 50 Hz
Power / kW	16.5	16.5
Volume of wash tank / ltr	76	95
Capacity / ltr / minute	585	2 x 600
Volume of wash tank / ltr	25	25
Cleaning time / sec	20	20
Rinse water temperature / °C	85	85
Water consumption per cleaning cycle / ltr	8	10
Water connection	½"	½"
Nett weight (without water) / kg	220	250

The utensil washer can optionally be equipped with soap dispenser, integrated mixer tap and an external hose.

Utensil washer

ETW-30



- Wash volume ETW-30:
645 x 1290 x 635 mm (hxwxd)

General	ETW-30
Width / mm	1555
Depth / mm	745
Height closed / mm	1631
Height open / mm	2088
Electrical connection	400 V / PE / 50 Hz
Power / kW	17.5
Volume of wash tank / ltr	125
Capacity / ltr / minute	600 + 950
Volume of wash tank / ltr	25
Cleaning time / sec	20
Rinse water temperature / °C	85
Water consumption per cleaning cycle / ltr	12
Water connection	½"
Nett weight (without water) / kg	280

The utensil washer can optionally be equipped with soap dispenser, integrated mixer tap and an external hose.



Elpress is the leading specialist in the field of industrial hygiene. We focus on the delivery of total solutions: customer-focused systems that are expertly integrated into your business process. By simplifying processes and sharing our knowledge, our wide product range enables us to add value to your business.

Years of experience has led to high-quality products. Reliability and user-friendliness have been proven in practice. Thanks to the broad possibilities of our products, we offer a solution for every challenge.

We have a Passion for Hygiene!

Elpress BV

Handelstraat 21
Industriegebied Saxe Gotha
NL-5831 AV Boxmeer
Tel.: +31 (0)485 51 69 69
Fax: +31 (0)485 51 40 22
E-mail: sales@elpress.com
Website: www.elpress.com



visit our website